



58 / 58 / **64** / 88
COUPE RPH

STANDARD SPECIFICATION

EUROPE VERSION

DIMENSIONS AND MAIN CHARACTERISTICS

Length Overall L_{OA} (Include swim platform exclude anchor roller)	20,74 m
Hull Length L_H ISO 8666 (Net GRP-Swim platform excluded)	19,33 m
Waterline Length L_{WL} ISO 8666	19,06 m (@ full load)
Hull Beam B_{Hmax} ISO 8666	5,9 m
Max Draft - T_{MAX} ISO 8666	1,48 m (@ full load)
Loaded Displacement Dass - mLDC ISO 8666	46 tonnes
Height Above the Waterline H_a ISO 8666	6,33 m (without equipment on top)
Light Craft Condition Mass - $m_{LCC ISO}$ 8666	38 tonnes
Diesel Tank Capacity	5000 l
Fresh Water Tank	1400 l
Black Water Tank Capacity	400 l
Gray Water Tank Capacity	400 l
Cabins	3 standard + 1 (optional crew cabin)
Beds	6 + (2 crew)
Heads	4 + 1 (crew head)
Building Material	GRP / Carbon hybrid fiber
Hull Type	Semi Displacement
Exterior Styling & Concept	Frers Naval Architecture & Engineering
Interior Decor	Design Studio Spadolini
Hull Design	Frers Naval Architecture & Engineering
Engines	VOLVO D13 900HP VOLVO D13 1000HP x 2 (optional)
Marine Gears	ZF 335 IV ZF 500 IV (optional)
Reduction Ratio	1.964:1
Transmission	V drive
Propeller Diameter (max)	860 mm
Max Speed	26 knots (with 900 HH engine) 28 knots (with 1000 HP engine)
Cruising Speed	16 knots
Economy Cruising speed	10 knots
Consumption @ Cruising Speed 16 kn	130 l/hr
Consumption @ 10 kn	38 l/hr
Range 10 kn (incl. 10% reservoir)	Approx. 1.200NM
Certification	CE Category A

NOTE: All performance specified in the table above are design data and applies to a standard configuration boat (standard equipment installed as per this standard list) with clean keel, propellers, and rudders. Furthermore, the performance levels indicated above have been defined under good sea and wind conditions (Beaufort Scale level 1, Douglas Scale level 1, ambient $T < 25^\circ$, seawater $T = 15^\circ$, atmospheric $P = 103250$ Pa) with 2 people on board, 25% fuel, and fresh, grey and black water tanks empty. Different or harsher sea conditions and additional selected optional equipment may affect the performance.

STRUCTURE OF THE BOAT

The structural design is compliant to EN-ISO 12215. The hull, deck and superstructures are constructed in sandwich technology. Entire boat have been built using the vinylester resin infusion technique and assembled with structural adhesive engineered for marine application. Thanks to the vinylester resins maximum resistance to osmosis and better surface finishing Sirena Marine is therefore able to provide a **5-year warranty against osmosis**. This construction technology reduces weight and improves construction quality and consistency. Superstructure made from **carbon hybrid fabrics for improved lightness and strength**. Bulkheads are made in PVC sandwich and secondary bonded to the hull with lamination.

SEMI DISPLACEMENT HULL

A semi-displacement vessel can take advantage of **increased power** and can achieve **greater speeds** when needed. Most of the time, semi-displacement vessel operates in displacement mode and is very **fuel-efficient**. Due to the lesser draft as compared to full displacement vessels, semi-displacement vessels have less “wetted surface area”, requiring less horsepower to propel the hull through the water. A semi-displacement hull can achieve about 35% more speed with the same engine load requirement as compared to a full displacement hull form, or conversely at the same speed use significantly less fuel and energy. The hard chine hull of a semi-displacement vessel is inherently more stable than a rounded bottom full displacement hull. Semi-displacements vessels are far more comfortable at anchor than any rounded bottom design.

EXTERIOR

HULL

- External surface finished with high resistance white gelcoat
- Moulded with tunnel for bow thruster and reinforcement for stern thruster
- Waterline boot top in burgundy red
- Antifouling painting
- Access from the port side of the cockpit via a GRP teak laid stair and a built in locker

FLYBRIDGE

- Hybrid carbonfiber flybridge
- Courtesy lights on steps
- Fore sundeck area with removable cushions and storage underneath
- Anti-skid surface
- Hinged access weathertight Lewmar hatch in white aluminium and Perspex®
- ISO and ABYC compliant stainless steel handrails and pulpits
- Plexiglas® windshield
- Accommodation for up to 6 people on starboard sofa, with storage underneath
- Table for up to 8 people, with teak laid top
- Mast for 18" 4 kW HD radar, navigation lights, VHF antenna, horn and optional navigation equipment
- Shower with hot/cold water mixer on mast
- Starboard wetbar unit with sink, barbeque and storage for optional fridge
- Port side minibar with storages underneath
- Aft sundeck area for optional seating area, chaise lounge or tender crane
- Single captain seat
- Helm station with high resistance grey gelcoat
- Storages underneath the helm station

Helm station equipped with

- Garmin 10" MFD GPSMAP 8610
- Garmin GHS 11 VHF Radio
- Depth/Speed transducer
- Chain wash-down switch
- Anchor windlass control
- Navigation/anchor lights switch
- 12V socket
- USB socket
- Interceptor manual control
- Chain counter
- Horn switch
- Compass
- Activation of bilge pumps
- Bow thruster joystick

Monitoring system functions integrated in to chartplotter displays

- Grey water level gauge
- Black water level gauge
- Fresh water level gauge
- Fuel tank level gauge
- Shore power connection status-alarm
- Aft storage door position status
- Tenderlift platform position status
- Bilge high level alarm

SUPERSTRUCTURE

- Deckhouse with front and side visors
- Hybrid carbonfiber superstructure
- Tempered laminated glass deckhouse windows
- Europa grey side windows and neutral colour for front windows
- Manuel sliding window in the helm station (port side)
- Starboard side walking area access via semi automatic Opacmare pantograph door
- 4 windscreen wipers with washer
- Navigation lights (red, green)
- Sirena Yachts logo on fashion plates exterior sides

FOREDECK

- Chain and deck wash down system
- Self-draining chain locker and housing for 8 fenders
- Fixed bow anchor roller
- Stainless steel anchor shield on bow
- Ultra 60kg stainless steel anchor
- 100 meter high-resistance chain, 12mm diameter
- 2300W Lofrans anchor windlass
- Nr. 2 stainless steel mushroom bollards
- Nr. 2 stainless steel hawses
- Anti-skid surface
- Teak gunwale
- C-shaped GRP sofa with removable cushions and high-volume storages underneath with stainless steel handrails and GRP cup holders
- Sunbathing area with removable cushions and storage underneath with stainless steel handrails and GRP cup holders
- Fresh water filling cap

SIDE WALKWAYS

- Nr. 2 fairleads with cleat inside at mid-ship
- Black water tank deck suction discharge outlet
- Grey water tank deck suction discharge outlet
- Fuel filling caps on both sides
- Teak gunwale
- Side walking areas and first steps of bow area entrance in teak
- Courtesy lights on steps

AFT COCKPIT

- Nr. 2 fairlead at cockpit
- Nr. 2 stainless steel mushroom bollards
- Access to cockpit from swim platform, via GRP teak covered stairs on port and starboard side, protected by Nr. 2 stainless steel and Plexiglas® gates
- Courtesy lights on steps from platform to the main deck
- Cockpit floor in teak
- Opacmare Saloon door with 3 stainless steel panels (2 sliding) in tempered glass
- Cockpit sofa with cushions for 6/8 people (with optional foldable chairs)
- Fixed cockpit table with teak top
- Engine room access via hatch
- Soft patch for engine and generator removal
- Flybridge access with a GRP teak laid stair and a built in locker
- LED spotlights under the flybridge with dimmer
- Nr. 2 watertight loudspeakers
- Emergency panel, with remote controlled battery switches for service and engine, manual activation of the fire extinguisher system

AFT PLATFORM / TRANSOM

- Manuel folding swim ladder
- Side boarding gate on each side
- Shower with hot and cold water mixer
- Opacmare hydraulic tenderlift platform with 500kg net working load capacity
- Teak laid surface
- Access to stern storage area (optional crew cabin) via Opacmare watertight pantograph door
- Fresh water shore connection
- Shore power socket 63A
- Maximum tender dimension according to platform 3,85m x 1,75m
- Nr. 2 stainless steel mushroom bollards

INTERIOR

SALOON

- Same level floor with dinette and galley
- Carpet flooring
- Upholstered C shaped sofa with a loose furniture seat on starboard side and storage underneath
- Coffee table at starboard side
- Storage cabinet on port side with drawers shelves, space to house TV lifting system at port side
- Saloon door curtain in fabric
- LED spotlights with dimmer
- Roman curtains on side windows
- Fusion Marine entertainment system with two loudspeakers in salon and two loudspeakers in aft cockpit
- TV antenna predisposition
- Nr. 2 AC sockets

DINETTE

- Dinette area on starboard side
- Carpet flooring
- Dining table for six people
- Cabinet for dishware and cutlery
- Roman curtain
- LED spotlights with dimmer
- Nr. 1 AC socket

GALLEY

- Galley area on port side
- Venetian blinds
- Sliding opening window
- High pressure laminate flooring
- Low and high cupboards
- Refrigerator/freezer 268lt (196lt + 72lt) at portside
- Worktop in Corian®
- Stainless steel sink with water mixer
- Four-hob glass ceramic cooktop with stainless steel pan holder
- Oven
- Extraction hood
- LED spotlights
- Rubbish bin
- Nr. 2 AC socket

HELM STATION (SALOON)

- Double helm seat on port side
- Grabrail
- Courtesy sofa next to helm
- AC-DC switch board
- Nr. 1 AC socket

Helm station equipped with

- Steering wheel
- Garmin 10" MFD GPSMAP 8610
- Garmin GHS 11 VHF Radio
- Depth/Speed transducer
- Chain wash-down switch
- Spotlights switch
- Windscreen washing switch
- Anchor windlass control
- Navigation/anchor lights switch
- 12V socket
- USB socket
- Interceptor control
- Bow thruster joystick

- Chain counter
- Horn switch
- Activation of bilge pumps
- Compass
- Engine room ventilation

Monitoring system functions integrated in to chartplotter displays

- Grey water level gauge
- Black water level gauge
- Fresh water level gauge
- Fuel tank level gauge
- Shore power connection status-alarm
- Aft storage door position status
- Tenderlift-platform position status
- Bilge high level alarm

STAIR TO LOWER DECK / CORRIDOR

- Carpet stairs
- Courtesy lights on steps
- Handrail
- Access to day head, master cabin, guest cabin and VIP cabin

OWNER'S CABIN

- Located amidships - full beam
- Carpet flooring
- Private access to owners head
- Nr. 2 AC sockets
- Double bed with storage underneath
- Mattress
- Nightstands with storage on both sides
- Two full size wardrobes with hangers and shelves
- Full size mirror
- TV antenna predisposition
- Two seats and coffee table with integrated vunity feature on starboard side
- Storage unit on port side with drawers
- LED spotlights
- 2 wall lights
- Roman curtains
- Two scenic windows

OWNER'S HEAD

- Full beam with private access from the owner's cabin
- Separated toilet and shower area with a door
- Corian flooring in head
- Washbasin with water mixer
- Bathroom counter top in Corian
- Mirror
- Cabinet underneath the sink
- Cabinet on port side
- Air extractor in shower
- Shower support with adjustable height and shower head on ceiling with mixer
- Corian flooring in shower area
- Shower Plexiglas® enclosure
- Electric toilet
- LED spotlights
- Two portlights and scenic windows
- AC socket
- Toilet accessories
- Venetian blinds

VIP CABIN

- Located on lower deck fore side
- Carpet flooring
- Private access to VIP head
- Double bed with underneath storage
- Mattress
- Wardrobe with shelves on port side
- Wardrobe with hanging space and full size mirror on starboard side
- Shelf with storage compartment
- TV antenna predisposition
- 2 wall lights
- Openable portlights and scenic windows
- Roman curtains
- Nr. 2 AC sockets
- GRP escape hatch with integrated escape ladder to the fore deck
- Vanity unit with seat

VIP'S HEAD

- Located on starboard side of the VIP cabin with private entrance
- Corian flooring in head
- Washbasin with water mixer
- Bathroom counter top in Corian
- Mirror
- Cabinet underneath the sink
- Air extractor in shower
- Shower support with adjustable height and shower head on ceiling with mixer
- Corian flooring in shower area
- Shower Plexiglas glass enclosure
- Electric toilet
- LED spotlights
- Toilet accessories
- One portlight and window in shower with venetian blind
- One portlight and window in toilet area with venetian blind
- Nr. 1 AC socket

GUEST CABIN

- Located on port side
- Carpet flooring
- Private access to guest head
- Twin beds with underneath storages
- Mattresses
- Nightstand between two beds
- Full size wardrobe with hanging space mirror and shelves
- One portlight and scenic window
- Roman curtain
- Led spotlights
- 1 wall light
- AC socket

GUEST'S HEAD

- On port side with direct entrance from guest cabin
- Corian flooring in head
- Washbasin with water mixer
- Bathroom counter top in Corian
- Mirror
- Cabinet underneath the sink
- Air extractor in shower
- Shower support with adjustable height and shower head on ceiling with mixer
- Corian flooring in shower area
- Shower Plexiglas enclosure
- Electric toilet
- LED spotlights

- Toilet accessories
- 1 portlight and window in shower with venetian blind
- 1 portlight and window in toilet area with venetian blind
- AC socket

DAY HEAD

- Laminate flooring
- Washbasin with water mixer
- Corian flooring in head
- Mirror
- Cabinet underneath the sink
- Air extractor
- Electric toilet
- LED spotlights
- Toilet accessories

AFT STORAGE AREA

- Access via Opacmare pantograph door on the stern
- Window and portlight on stern
- LED spotlights
- Opacmare door for entrance to engine room
- Storage area

CREW QUARTER (optional)

- Access via Opacmare pantograph door on the stern
- Access door to engine room
- Twin beds with storages underneath
- Mattresses, pillows and bedspreads
- Window and portlight on stern
- GRP flooring
- Curtain
- Nr. 1 AC socket
- Nr. 1 USB socket
- LED spotlights
- Access to head from crew cabin
- Electric toilet
- Carbon monoxide alarm
- Washbasin with water mixer
- Toilet accessories
- Mirror
- Nr. 1 AC socket

ELECTRIC SYSTEM

- All cables and conduits are halogen-free and self-extinguishing. Cross sections are calculated to ensure allowable voltage drop
- Bounding system consists of 4 sacrificial anodes (two on stern, two under engines). Cables are tin plated copper to minimize corrosion.
- Grounding system joins all electrical circuits for safety. It includes galvanic isolator to prevent galvanic corrosion from shore connection.
- 230V AC – 50Hz with 63A shore connection
- 24V DC – 12V DC with negative grounded
- Electrical panels with switches and instruments in engine room, steering area and lower deck cabins
- Mastervolt AC Master 1500W Inverter , 24/230, 50Hz

GENERATOR

- Nr. 1 Cummins Onan Generator 9,5 kW-50Hz placed in the engine room

PROPULSION SYSTEM

- 2 x VOLVO D13 900 HP Engines with V-drive ZF 335 IV Gearbox (ratio 1.964:1)
- 70mm diameter Marinox 25 Duplex shaft with 10 degrees angle
- Aluminium bronze shaft support
- 860x770mm 5 blades Nibral Teignbridge Propellers
- PSS shaft seal

STEERING & MANOEUVERING SYSTEMS

- Servo electric power assisted steering system and autopilot system
- Rudder blade in aluminium bronze Servo electric power assisted steering system and autopilot system
- Dynamic automatic trim control via Interceptor
- 10,5 kW variable bow thruster- 24VDC,D. 250 mm

SHORE POWER CONNECTION

- Shore power socket 230V-63A
- The power lines are protected by dedicated GFCI circuit breakers
- 15 meter shore connection cable

BATTERIES

- 10 Mastervolt batteries - 130Ah-24V, including: 6 for services, 4 for engine start
- 1 Mastervolt battery 95Ah 12V for generator
- 1 Mastervolt battery charger 12V 25A for generator starting battery
- 1 Mastervolt battery charger 24V 100A for service batteries
- 1 Mastervolt battery charger 24V 30A for engines starting batteries

BILGE SYSTEM

- Nr.1 x 24 V Electrical Bilge Pump in engine room
- Nr. 2 x 24V automatic Electrical Bilge Pump 24V in the accommodation area
- Nr. 1 manual bilge pump located at aft deck under mooring area. Two suction areas through a valve, one suction at accommodation area, one suction at engine room
- 5 Bilge level alarms 3 bilge high level alarms
- Engine room emergency pump through a diverting valve fitted on engine seawater cooling line
- Each electric pumps can be manually activated by switches placed in the helm station

FIRE EXTINGUISHING SYSTEM

- Seafire Novec manual and automatic extinguishing agent, located in the engine room, remote operated from the cockpit emergency switch panel.
- Automatic shutdown system (engines, generators, engine room ventilation fans and fuel valves) with high temperature sensor in engine room.
- Alarm panels on helm station and flybridge dashboards

FUEL SYSTEM

- 2 interconnected S.S. fuel tanks (total 5000 liters) in engine room
- Fuel level indicators for each tank on monitoring system
- Visual level gauge on port and starboard tanks
- Nr. 2 filling ports on deckhouse sides
- 2 single CAT separation filters for engines
- 1 single Racor separation filter for generator

FRESH WATER SYSTEM

- Nr. 1 HDPE tank, 1.400 liters total capacity
- Self-priming Gianneschi fresh water pump
- Tank level indicator and empty status integrated in the monitoring system
- 80 liters water heater 220V-1200W
- Hot and cold water in all head rooms, galley, cockpit, flybridge sink and fly shower
- Cold water outlet in engine room
- Filling cap at fore deck
- Shore fresh water connection

BLACK WATER SYSTEM

- Electric toilets with built-in macerators
- Nr. 1 HDPE tank 400 liters capacity
- Tank level indicator integrated in the monitoring system
- 3/4 and full tank indication in the heads
- Fresh water toilet flushing
- Holding tank discharge via suction on deck starboard side walking area.
- Overboard discharge of waste water, via a dedicated line at the exit of the holding tank

GRAY WATER SYSTEM

- Nr. 1 HDPE tank 400 liters capacity
- 3 sump tanks
- 3/4 and full tank indication in the heads and galley
- Water drainage from showers and sinks into tank
- Level sensor integrated in the monitoring system
- Water drainage via manifold
- Manual / automatic overboard discharge

SEA WATER SYSTEM

- Nr. 2 sea water intakes with filters and valves for engine cooling system
- Nr. 1 sea water intake with filter and valve for generator cooling system
- Nr. 1 sea water intake with filter and valve for chain wash and deck wash system

ENGINE GAS EXHAUST SYSTEM

- Water-cooled engine exhaust, thermal-insulated stainless steel manifolds, fiberglass muffler integrated into the hull structure, submerged outlets, and bypass line on hull sides

VENTILATION/EXTRACTION

- Air inlet and outlet openings with a GRP cover on hull sides.
- Nr. 2 24V Gianneschi air inlet fans at port side ventilation channel
- Nr. 4 24V Gianneschi extraction fans starboard side ventilation channel
- Mist eliminator at each channel

OTHER EQUIPMENTS

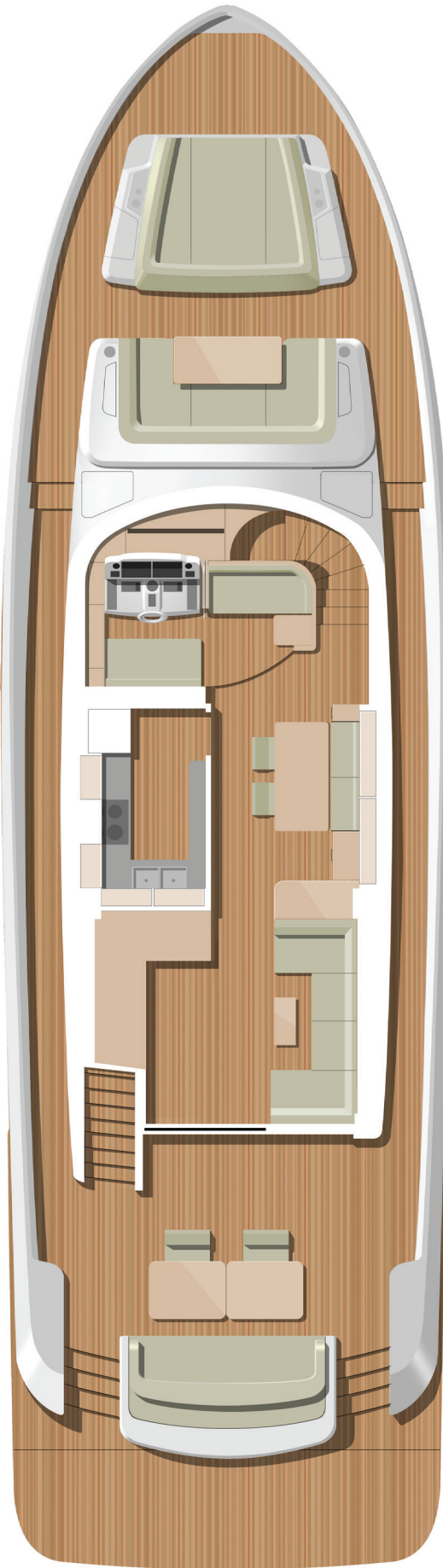
- Six 12 meters mooring lines in 18mm diameter
- Nr. 8 fenders with 8mm diameter lines
- Nr. 4 leather fender hook
- Fender covers with Sirena Yachts logo
- Owner's manual

Sirena Yachts reserve the right to change specification without any prior notice.
Effective from 1st of January 2020 **REV04**. This replaces all previous lists.

Sirena 64- Flybridge



Sirena 64 Main Deck



Sirena 64 Layout

3 Cabin Layout



4 Cabin Layout



SIRENA  YACHTS

A brand of  SIRENA MARINE