

SIRENA YACHTS

58 / 58 / 64 / **88**
COUPE RPH

STANDARD SPECIFICATION

EUROPE VERSION

DIMENSIONS AND MAIN CHARACTERISTICS

Length Overall LOA	26,81 m/ 88'
(Include swim platform exclude anchor roller)	26,81 m/ 88''
Hull length LH ISO 8666	23,94 m/ 78'5''
(Net GRP-Swim platform excluded)	23,95 m/ 78''7'
Waterline Length LWL ISO 8666	23,94 m/ 78''5'
Hull Beam BHmax ISO 8666	7,1 m/ 23'' 2'
Max Draft - TMAX ISO 8666	1,84 m/ 6'
Loaded displacement mass - mLDC ISO 8666	100 tonnes
Height above the waterline Ha ISO 8666	9,24 m
Light craft condition mass - mLCC ISO 8666	84 tonnes
Diesel tank capacity	11000 lt 165000 lt(opt)
Fresh water tank	2400 lt + 1470 lt (opt.)
Black water tank capacity	1040 lt
Gray water tank capacity	1070 lt
Cabins	5+2 Cabins
Beds	10+3
Heads	6+1(crew head)
Building Metarials	Hybrid carbon fiber deck & superstructure
Hull type	GRP hull
Exterior styling & concept	German Frers
Interior Decor	Cor D. Rover
Hull Design	Frers Naval Architecture &Engineering
Engines	2 x 1550HP MAN V12 (1140kW)
Marine gears	ZF 2050V
Reduction ratio	2,467:1
Transmission	V Drive
Propeller diameter (max)	1050 mm
Max speed	25 knots
Cruising speed	16 knots
Economy cruising speed	9 knots
Consumption @ cruising speed 16 kn	300 l/h
Consumption @ 9 kn	65 l/h
Range 9 kn (incl. 10% reservoir)	2100 NM 3100 NM (with option fuel tanks)
Certification	CE Category A

NOTE: All performance specified in the table above are design data and applies to a standard configuration boat (standard equipment installed as per this standard list) with clean keel, propellers, and rudders. Furthermore, the performance levels indicated above have been defined under good sea and wind conditions (Beaufort Scale level 1, Douglas Scale level 1, ambient T < 25°, seawater T =15°, atmospheric P = 103250 Pa) with 2 people on board, 25% fuel, and fresh, grey and black water tanks empty. Different or harsher sea conditions and additional selected optional equipment may affect the performance.

CONSTRUCTION & HULL

- Vinly ester resin vacuum infused GRP hull stiffened with longitudinal stringers and transverse sandwich bulkheads
- Cored hybrid carbon deck & deckhouse & superstructure
- Gelcoat finish
- All around insulation & floating floor & box in box furniture system to absorb noise and vibration
- Moulded with tunnel for bow thruster and reinforcement for stern thruster
- Antifouling painting

PROPULSION & STEERING SYSTEM

- Nr. 2 MAN V12 1550 HP Main Engines
- ZF 2050V 1:2.467 Gearbox
- Electronic engine and gear shift control systems
- Marinox shafts 4100mm length x 80 mm diameter
- 5-blade Nibral propellers 1050mm diameter
- Aluminum bronze shaft supports
- Nibral rudders
- Dripless shaft seals
- Engine driven tunnel type hydraulic 320 kgf bow-thruster with dual station controls
- Humphree interceptors
- Power-assisted electro hydraulic steering system

NAVIGATION ELECTRONICS

- SIMRAD NSS16 evo3 with Wi-Fi & Dual CHIRP Sounder
 - Nr.3 16" chartplotter in main helm
 - Nr.2 16" in flybridge helm
- Navico BR24 BroadBand 4G radar
- RS90 VHF with Navico 1710 antenna in main helm
- RS90 VHF second handset & speaker for flybridge helm station
- AP44 autopilot controller display
- GPS antenna
- Nr.2 compass

MOORING

- Nr.2 anchors at sides (HHP HV fully balanced anchor 80kg galvanized steel)
- Nr.2 100m 14mm hot dip galvanised chain
- Stainless steel protection
- Nr.2 3600W vertical windlass/anchor winch at bow with AC motor
- Nr.2 underdeck chain stoppers
- Nr.1 2200W vertical mooring capstan at bow with vertical AC motor
- Nr.2 2000W vertical mooring capstans at stern with horizontal DC motor
- Nr.4 stainless steel chocks at stern
- Nr.4 stainless steel cleats at stern
- Nr.2 stainless steel chocks at bow
- Nr.2 stainless steel bollards at bow
- Nr.2 stainless steel spring cleats at mid-ship

EXTERIOR

FLYBRIDGE

- Anti-skid gelcoat finish floor
- Hardtop with electric sunroof
- L shape sofa and seating area
- Table up to 8 people
- Two adjustable captain seats at starboard side

Minibar units and storages

- Barbeque
- Fridge (70lt)
- Sink unit
- Storage

Helm station equipped with:

- MAN engine display
- MAN engine throttle
- Navigation instruments
- Chain counter
- VHF
- Bow thruster control
- Interceptor control
- Magnetic compass
- Navigation light switches
- Wireless charger
- Bilge pumps activator
- Horn switch
- Chain wash down switch
- Cup holder
- Teak laid GRP & stainless steel stairs from cockpit to flybridge on starboard side
- Passage to RPH via companionway door
- Passage to foredeck via port side gate
- Plexiglas® windshield
- Fashion plates
- Courtesy lights
- Navigation lights
- Horn

AFT PLATFORM & GARAGE

- Fixed platform to carry 800kg with hydraulic bathing ladder
- Space for optional tender and jet-ski
- Hydraulic crane on stern for lifting and launching
- Nr.2 stainless steel cleats at aft sides
- Telescopic gangway with remote control
- Courtesy lights
- Fresh water inlet/outlet
- Hand shower

COCKPIT & SIDE WALKING

- GRP seat and teak top table up to 8 people
- Teak laid floor
- Teak laid flybridge stairs
- Teak laid side walking
- Teak laid bulwarks
- Stainless steel pulpit side stanchions and guardrails
- Access to crew cabin via pantograph watertight door from side walkway
- Nr.2 fashion plates with Sirena Yachts logo
- Stairs to foredeck on starboard
- Dimmered lights
- Two side boarding gates
- Emergency shut off panel
- Control panel for garage door, gangway and platform
- Safety gates for aft entrance
- Speakers

FOREDECK

- Teak floor
- Access to master cabin from foredeck via weather tight door
- Sunbathing area at upper foredeck
- Chain wash on foredeck
- Chain locker with hatch
- Scenic glass on side bulwarks
- Seating area with table equipped with lockers and removable cushions

INTERIOR

MAIN DECK

SALOON & DINING ROOM

- Carpet flooring
- Coffee table at port side
- Seat for 3 at port side
- Seat for 3 at starboard side
- Nr.2 armchairs
- TV unit at starboard
- Table up to 8 people at dinette
- Nr.8 dining chairs
- Full height glass sliding door on dinette starboard side
- Electrically driven saloon sliding glass door at the saloon entrance
- Access to galley at port fore side of dinette with sliding door
- Stairs up to RPH at starboard side
- Stairs down to lower deck at starboard side
- Dimmered saloon lights
- Led courtesy lights
- Roman blinds & curtain
- Floating floor insulation above the engine room on saloon side to reduce noise & vibration
- Soundproof carpet underlay to absorb walking noise on deck
- Full height windows on each sides
- Decorative aft corner shelf units
- Full height cabinet on starboard side with space for optional wine cooler
- Half height storage cabinets on sides of the passage from saloon to dining area
- Leather ceiling boards
- Sockets
- A.C. control panel
- Speakers

GALLEY

- Access to dinette with a sliding door
- Access to side walking with a door
- Vinyl flooring
- Low and high cupboards
- Full height refrigerator (300lt) + full height freezer (213lt) 220V
- Worktop in Corian
- Stainless steel sink with water mixer
- Four-hob glass ceramic induction cooktop with stainless steel pan holder
- Combi microwave / oven / grill
- Dishwasher
- Extraction hood
- LED spotlights
- Air condition outlet
- Sockets
- Venetian blinds

WHEEL HOUSE - RAISED PILOT HOUSE

Professional helm station equipped with:

- MAN engine display
- MAN engine throttle
- Navigation instruments
- Chain counter
- VHF
- Bow thruster control
- Interceptor control
- Magnetic compass
- Navigation light switches
- Wireless charger
- Bilge pumps activator
- Horn switch
- Chain wash down switch
- Cup holder
- AC/DC power sources
- Generator Start/Stop panel
- 220V sockets
- USB sockets
- Engine room fire extinguisher activation
- Single height adjustable leather helm seat
- Lounge/seating unit at port side
- Access to lobby via interior stairs
- Access to fly bridge via companionway
- Storage on each side of dashboard
- Leather covered wheel
- Wooden flooring
- LED lighting
- Triple window wipers

MASTER CABIN

- Full-beam owner's cabin on main deck
- Double bed
- Nr.2 reading lights
- Nr.2 nightstands with drawer
- Full height side windows on each side of the cabin
- Courtesy lighting
- Venetian blinds
- Carpet floor
- Wardrobes
- Safe
- Furniture unit at starboard side
- Nr.2 single chairs and coffee table at port side
- Access to fore deck
- Soundproof carpet underlay to absorb walking noise on deck

MASTER HEAD

- Access with a door from master cabin with center sliding doors
- Skylight on shower & sink area
- Glass shower door
- Two sinks
- Electric toilet
- Lifting mirror
- Shower
- Venetian blinds
- Air extraction
- Marble work top and floor
- Lacquer painted / veneer walls
- Corian shower walls

LOWER DECK

AFT VIP CABIN

- Carpet flooring
- Double bed
- Nr.2 wardrobes
- Nightstands each side
- Vanity table at port side
- Nr.2 reading lights
- Openable portlights
- Venetian blinds

AFT VIP HEAD

- Single sink unit
- Electric toilet
- Nr.1 openable portlight
- Mirror
- Separated shower area
- Venetian blinds
- Air extraction
- Marble work top and floor
- Lacquer painted / veneer walls
- Corian shower walls

FORE VIP CABIN

- Carpet flooring
- Double bed
- Separated dressing room
- Furniture unit at port side and starboard side
- Seat for 1 person at each side
- Nr.2 reading lights
- Nr.2 openable portlights
- All around insulation & floating floor to absorb noise and vibration

FORE VIP HEAD

- Single sink unit
- Electric toilet
- Nr.1 openable portlight
- Mirror
- Blinds
- LED lights
- Separated shower area
- Glass on front wall between cabin and shower
- Air extraction
- Marble work top and floor
- Lacquer painted / veneer walls
- Corian shower walls

PORT SIDE GUEST CABIN

- Carpet flooring
- Nr.1 wardrobe
- Nr.1 nightstand between beds
- Nr.1 openable portlight
- Venetian blinds
- Nr.2 reading lights
- LED lights
- Drawers under bed

PORT SIDE GUEST HEAD

- Single sink unit
- Separated shower area
- Electric toilet
- Nr.1 openable portlight
- Mirror
- Blinds
- LED lights
- Air extraction
- Marble work top and floor
- Lacquer painted / veneer walls
- Corian shower walls

STARBOARD SIDE GUEST CABIN

- Carpet flooring
- Nr.1 wardrobe
- Nr.1 nightstand between beds
- Nr.1 openable portlight
- Venetian blinds
- Nr.2 reading lights
- LED lights
- Drawers under bed

STARBOARD SIDE GUEST HEAD

- Single sink unit
- Separated shower area
- Electric toilet
- Nr.1 openable portlight
- Mirror
- Blinds
- LED lights
- Air extraction
- Marble work top and floor
- Lacquer painted / veneer walls
- Corian shower walls

DAY HEAD

- Located on main deck
- Single sink unit
- Electric toilet
- Mirror
- Nr.1 openable portlight
- Air extraction
- Marble work top and floor
- Lacquer painted / veneer walls
- Corian shower walls

LAUNDRY ROOM

- Storage for laundries
- Ironing table
- Laundry basket
- Sink

CREW QUARTER

- 1 room with bunk bed
- 1 room with double bed
- Table for two
- Nr.2 wardrobes
- Access to engine room
- Carbon monoxide alarm

CREW HEAD

- Access to head from crew cabin
- Standing toilet
- Washbasin with water mixer
- Toilet accessories
- Air extraction
- Corian work top and floor
- Veneered walls

SYSTEMS

GENERATOR

- Single-phase generator
- 28kW / 230V AC - 50Hz for EU system
- Remote start up

SHORE POWER SOCKETS

- Glendenning master cable
- 63A socket, 15kW
- Galvanic isolation system

BATTERIES

- Services: Nr.6 225Ah 12V DC
- Engines: Nr.4 230Ah 12V DC
- Generator: Nr.2 90Ah 12V
- Service battery charger / service backup: Nr.2 Mastervolt 80Ah 24V
- Engine start up battery charger: Nr.1 Mastervolt 80Ah 24V
- Genset start up battery charger: Nr.1 Mastervolt 25Ah 12V
- Inverter: Nr.1 Mastervolt 24/2500 230V 50Hz

FIRE EXTINGUISHING SYSTEM

- Fixed fire extinguishing system in engine room
- Automatic shut of system
- Activation button on helm station
- 106lt NOVEC 1230 liquefied gas fire extinguisher
- Portable firefighting equipment's

FUEL SYSTEM

- Stainless steel fuel tanks
- Electronic fuel level sensors
- Single racor filters for engine and generator
- Remote diesel shut off valves
- Two refuelling plugs on deck port and starboard side

AIR CONDITIONING SYSTEM

- Nr.2 compressors in engine room, total 180000 BTU/h

BILGE SYSTEM

- Centralised system with suction in each compartment with high level sensors
- Emergency suction in engine room connected to one of the main engines

FRESH WATER SYSTEM

- HDPE water tank
- Plug for shore connection in aft
- Electrical water pump in engine room
- Nr.2 100lt water heater
- Two filling caps

BLACK WATER SYSTEM

- Centralised collection system
- Tank discharge through electric pump
- Macerator pumps
- Suction point on deck

GREY WATER SYSTEM

- Centralised collection system
- Tank emptying through electric pump
- Macerator pump
- Suction point on deck

VENTILATION SYSTEM

- Forced air ventilation in engine room via air extractors and air ducts

OTHER ITEMS AND EQUIPMENT'S

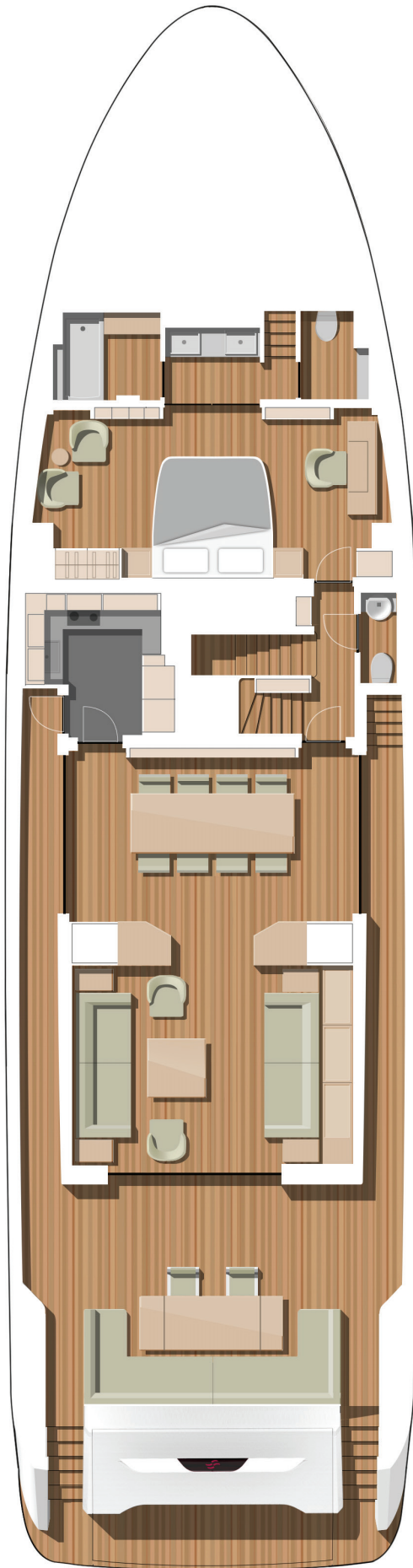
- Nr.8 Fenders
- Nr.4 Fender hooks
- Nr.8 Fender covers Sirena Yacht logo
- Nr.4 Mooring lines
- Owner's manual

Sirena Yachts reserve the right to change specification without any prior notice.
Effective from 1st of January 2020 **REV. 02** This replaces all previous lists."

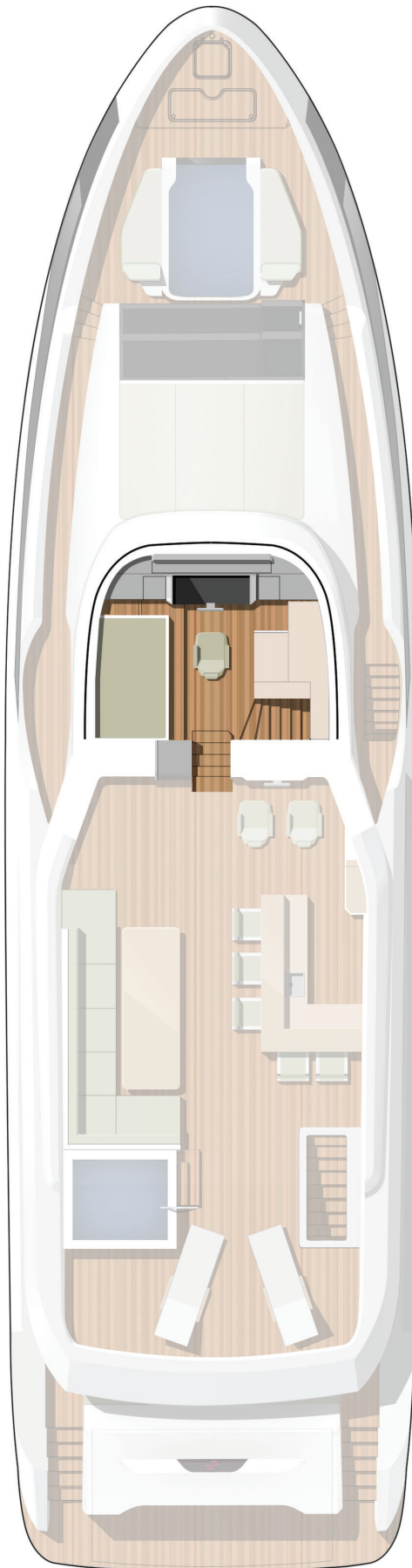
Sirena 88 Layout



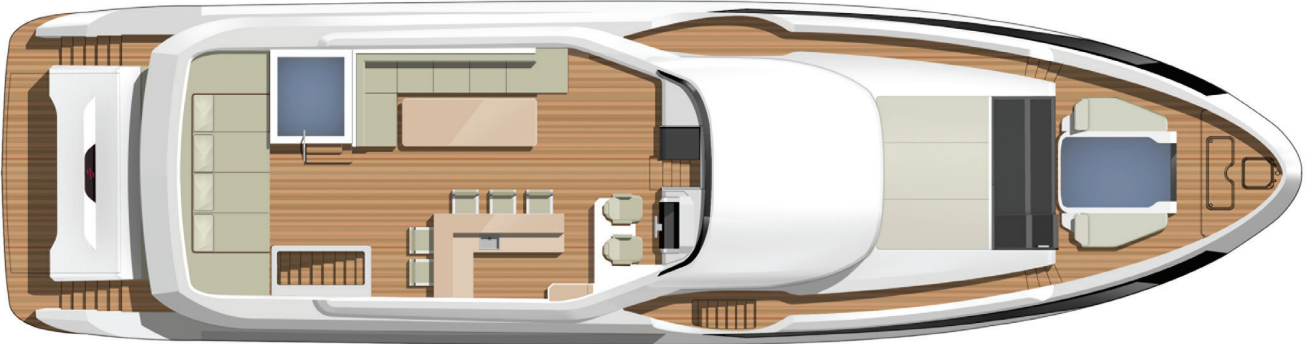
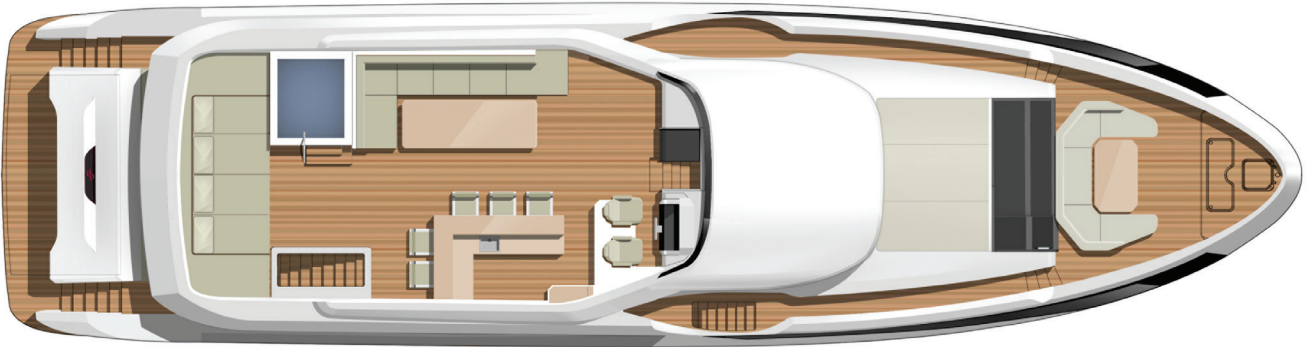
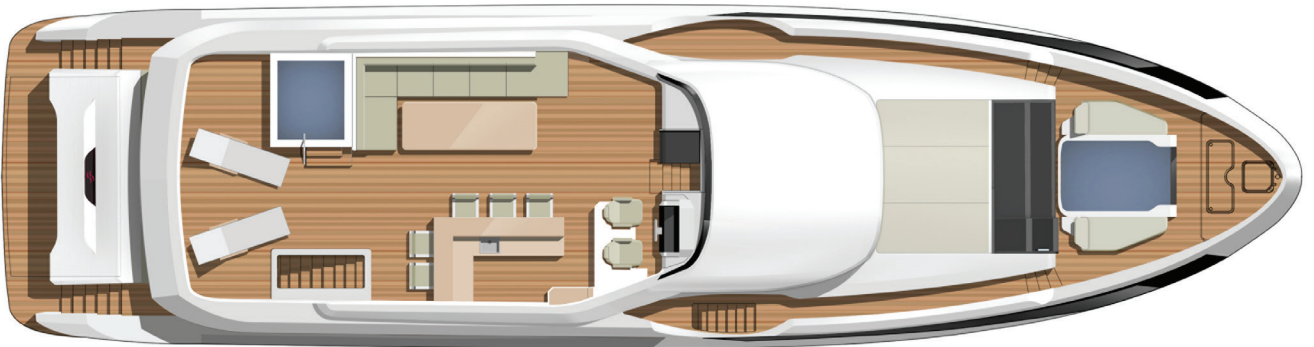
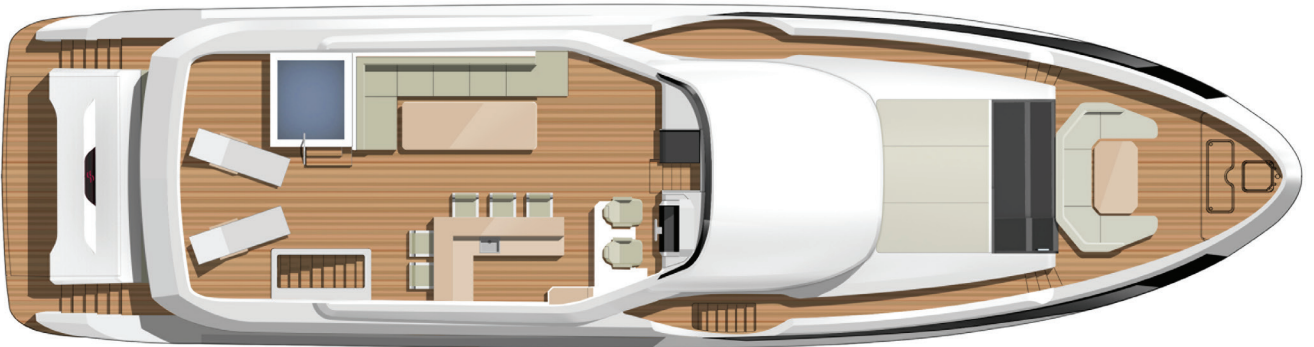
Sirena 88 Main Deck



Sirena 88 Wheel House



Sirena 88 Fly Bridge



SIRENA  YACHTS

A brand of  SIRENA MARINE