

SIRENA  YACHTS

58 / 58 / **68** / 88
COUPE RPH

STANDARD SPECIFICATION
EUROPE VERSION

DIMENSIONS AND MAIN CHARACTERISTICS

Length Overall L_{OA} (Include swim platform exclude anchor roller)	21,4m / 70'
Hull Length L_H ISO 8666 (Net GRP-Swim platform excluded)	19,9m / 65' 4"
Waterline Length L_{WL} ISO 8666	19,8m(@full load) / 64' 11"
Hull Beam B_{Hmax} ISO 8666	5,9m / 19' 4"
Max Draft - T_{MAX} ISO 8666	1,3m(@full load) / 4' 3"
Loaded Displacement D_{ass} - mLDC ISO 8666	47 tonnes / 103617 lbs
Height Above the Waterline H_a ISO 8666	6,33m (without equipment on top) / 20' 8"
Light Craft Condition Mass - $m_{LCC ISO}$ 8666	39,5 tonnes / 87082 lbs
Diesel Tank Capacity	5250 lt / 1387 gal
Fresh Water Tank	1400lt / 370 gal
Black Water Tank Capacity	400lt / 105 gal
Gray Water Tank Capacity	400lt / 105 gal
Cabins	3 standard + 1 (optional crew cabin)
Beds	6 + (2 crew)
Heads	3 +1 (crew head)
Building Material	GRP / Carbon hybrid fiber
Hull Type	Semi-displacement
Exterior Styling & Concept	Frers Naval Architecture & Engineering
Interior Decor	Cor.D.Rover Design Studio
Hull Design	Frers Naval Architecture & Engineering
Engines	VOLVO D13 900HP VOLVO D13 1000HP x 2 (optional)
Marine Gears	ZF 335 IV ZF 500 IV (optional)
Reduction Ratio	1.964:1
Transmission	V drive
Propeller Diameter (max)	860mm / 34"
Max Speed	26 knots (with 900 HH engine) 28 knots (with 1000 HP engine)
Cruising Speed	16 knots
Economy Cruising speed	10 knots
Consumption @ Cruising Speed 16 kn	130 l/hr / 34 gal
Consumption @ 10 kn	38 l/hr / 10 gal
Range 10 kn (incl. 10% reservoir)	Approx. 1.200NM
Certification	CE Category A

NOTE: All performance specified in the table above are design data and applies to a standard configuration boat (standard equipment installed as per this standard list) with clean keel, propellers, and rudders. Furthermore, the performance levels indicated above have been defined under good sea and wind conditions (Beaufort Scale level 1, Douglas Scale level 1, ambient $T < 25^\circ$, seawater $T = 15^\circ$, atmospheric $P = 103250$ Pa) with 2 people on board, 25% fuel, and fresh, grey and black water tanks empty. Different or harsher sea conditions and additional selected optional equipment may affect the performance.

STRUCTURE OF THE BOAT

The structural design is compliant to EN-ISO 12215. The hull, deck and superstructures are constructed in sandwich technology. Entire boat have been built using the vinylester resin infusion technique and assembled with structural adhesive engineered for marine application. Thanks to the vinylester resins maximum resistance to osmosis and better surface finishing Sirena Marine is therefore able to provide a **5-year warranty against osmosis**. This construction technology reduces weight and improves construction quality and consistency. Superstructure made from **carbon hybrid fabrics for improved lightness and strength**. Bulkheads are made in PVC sandwich and secondary bonded to the hull with lamination.

SEMI-DISPLACEMENT HULL

A semi-displacement vessel can take advantage of **increased power** and can achieve **greater speeds** when needed. Most of the time, semi-displacement vessel operates in displacement mode and is very **fuel-efficient**. Due to the lesser draft as compared to full displacement vessels, semi-displacement vessels have less “wetted surface area”, requiring less horsepower to propel the hull through the water.

A semi-displacement hull can achieve about 35% more speed with the same engine load requirement as compared to a full displacement hull form, or conversely at the same speed use significantly less fuel and energy. The hard chine hull of a semi-displacement vessel is inherently more stable than a rounded bottom full displacement hull. Semi-displacements vessels are far more comfortable at anchor than any rounded bottom design.

EXTERIOR

HULL

External surface finished with high resistance white gelcoat
Moulded with tunnel for bow thruster and reinforcement for stern thruster
Waterline boot top in burgundy red
Antifouling painting

FLYBRIDGE

Hybrid carbonfiber flybridge
Access from the port side of the cockpit via a GRP teak laid stair and a built in locker
Courtesy lights on steps
Fore seating area with table, removable cushions and storage underneath
Anti-skid surface
Hinged access weathertight Lewmar hatch in white aluminium and Perspex®
ISO and ABYC compliant stainless steel handrails and pulpits
Plexiglas® windshield
Accommodation for up to 8 people on starboard sofa, with storage underneath
Table for up to 8 people, with teak laid top
Mast for 18" 4 kW HD radar, navigation lights, VHF antenna, horn and optional navigation equipment
Shower with hot/cold water mixer on mast
Starboard minibar unit with sink, barbeque and storage for optional fridge
Port side wetbar with storages underneath
Aft sundeck area for optional seating area, chaise lounge or tender crane
Single captain seat
Helm station with high resistant grey gelcoat
Storages underneath the helm station

Helm station equipped with;

Garmin 12" MFD GPSMAP 8610
Garmin GHS 11 VHF Radio
Depth/Speed transducer
Chain wash-down switch
Anchor windlass control
Navigation/anchor lights switch
12V socket
USB socket
Interceptor manual control
Chain counter
Horn switch
Compass
Activation of bilge pumps
Bow thruster joystick

Monitoring system functions integrated in to chartplotter displays;

Grey water level gauge
Black water level gauge
Fresh water level gauge
Fuel tank level gauge
Shore power connection status-alarm
Aft storage door position status
Tenderlift platform position status
Bilge high level alarm

SUPERSTRUCTURE

Deckhouse with front and side visors
Hybrid carbonfiber superstructure
Tempered laminated glass deckhouse windows
Europa grey side windows and neutral colour for front windows
Semi automatic pantograph door on port side from helm area to side walking
4 windscreen wipers with washer
Navigation lights (red, green)
Sirena Yachts logo on fashion plates exterior sides

FOREDECK

Chain and deck wash down system
Self-draining chain locker and housing for 8 fenders
Fixed bow anchor roller
Stainless steel anchor shield on bow
Ultra 60kg stainless steel anchor
100 meter high-resistance chain, 12mm diameter
2300W anchor windlass
Nr. 2 stainless steel mushroom bollards
Nr. 2 stainless steel hawses
Anti-skid surface
Teak gunwale
C-shaped GRP sofa with teak border on backrest/armrest, removable cushions and high-volume storages underneath with stainless steel handrails and Teak cup holders
Sunbathing area with removable cushions and storage underneath with stainless steel handrails and Teak cup holders
Fresh water filling cap

SIDE WALKWAYS

Nr. 2 fairleads with cleat inside at mid-ship
Black water tank deck suction discharge outlet
Grey water tank deck suction discharge outlet
Fuel filling caps on both sides
Teak gunwale and floors
Courtesy lights on steps
Led spotlights on ceiling under the side visors

AFT COCKPIT

Nr. 2 fairlead at cockpit
Nr. 2 stainless steel mushroom bollards
Access to cockpit from swim platform, via GRP teak covered stairs on port and starboard side, protected by Nr. 2 stainless steel and Plexiglas® gates
Courtesy lights on steps from platform to the main deck
Cockpit floor in teak
Saloon door with 3 black aluminium panels (2 sliding) in tempered glass
Cockpit sofa with cushions for up to 8 people (with optional foldable chairs)
Fixed cockpit table with teak top
Engine room access via hatch
Soft patch for engine and generator removal
Flybridge access with a GRP teak laid stair and a built in locker
LED spotlights under the flybridge with dimmer
Nr. 2 watertight loudspeakers
Emergency panel, with remote controlled battery switches for service and engine, manual activation of the fire extinguisher system

AFT PLATFORM / TRANSOM

Manuel folding swim ladder
Shower with hot and cold water mixer
Hydraulic tenderlift platform with 500kg net working load capacity
Teak laid surface
Access to stern storage area (optional crew cabin) via watertight pantograph door
Fresh water shore connection
Shore power socket 63A
Maximum tender dimension according to platform 3,85m x 1,75m
Nr. 2 stainless steel mushroom bollards

INTERIOR

SALOON

Same level floor with dinette and galley
Carpet flooring
Upholstered C shaped sofa with storage underneath
Coffee tables at port side
Storage cabinet on starboard side with drawers shelves, space to house TV lifting system
Saloon door curtain in fabric
LED spotlights with dimmer
Roman curtains on side windows
Fusion Marine entertainment system with two loudspeakers in salon and two loudspeakers in aft cockpit
TV antenna predisposition
Nr. 2 AC sockets

DINETTE

Dinette area on starboard side at aft of the saloon
Carpet flooring
Dining table up to 8 people
Roman curtain
LED spotlights with dimmer
Nr. 1 AC socket

GALLEY

Galley area on port side at the aft of the saloon
Venetian blind
Sliding opening window on port side
Wooden Floor
Low cupboards
Refrigerator/freezer 268lt (196lt + 72lt) at portside
Worktop in Corian®
Stainless steel sink with water mixer
Four-hob glass ceramic cooktop with stainless steel pan holder
Oven
Extraction hood
LED spotlights
Rubbish bin
Nr. 2 AC socket

HELM STATION (SALOON)

Helm station and seat on port side
Seating area on starboard with folding study desk
AC-DC switch boards near dashboard in centerline
Nr. 1 AC socket

Helm station equipped with

Steering wheel
Garmin 12" MFD GPSMAP 8610
Garmin GHS 11 VHF Radio
Depth/Speed transducer
Chain wash-down switch
Spotlights switch
Windscreen washing switch
Anchor windlass control
Navigation/anchor lights switch
USB socket
Interceptor control
Bow thruster joystick
Chain counter
Horn switch
Activation of bilge pumps
Compass
Engine room ventilation

Monitoring system functions integrated in to chartplotter displays

Grey water level gauge
Black water level gauge
Fresh water level gauge
Fuel tank level gauge
Shore power connection status-alarm
Aft storage door position status
Tenderlift-platform position status
Bilge high level alarm

STAIR TO LOWER DECK / CORRIDOR

Carpet stairs
Courtesy lights on steps
Handrail
Storage area with shelves and lockers (optional laundry)
Access to common bathroom (port guest cabin bathroom) through storage area in corridor

OWNER'S CABIN

Located amidships - full beam
Carpet flooring
Private access to owners head
Nr. 2 AC sockets
Double bed with storage underneath
Mattress
Nightstands with storage on both sides
Big walk in wardrobe on aft starboard side next to owner's head
Full size mirror
TV antenna predisposition
Vanity table with a seat and drawers at portside
Storage unit on starboard side with drawers and a chaise lounge on it
LED spotlights
2 wall lights
Roman curtains
Two scenic windows

OWNER'S HEAD

Located between engine room and master cabin
Separated toilet and shower area with a door
Corian flooring in head
Laminate wall panels
Washbasin with water mixer
Bathroom counter top in Corian
Mirror
Cabinet underneath the sink
Air extractor in shower
Shower support with adjustable height and shower head on ceiling with mixer
Corian flooring in shower area
Shower Plexiglas® enclosure
Electric toilet
LED spotlights
One portlight in shower and scenic window
AC socket
Toilet accessories
Venetian blinds

VIP CABIN

Located on lower deck fore side
Carpet flooring
Laminate wall panels
Private access to VIP head
Double bed with underneath storage
Chest tite storage with cushions in front of the bed
Mattress
Wardrobe with shelves on port side

Wardrobe with hanging space and full size mirror on starboard side
Shelf with storage compartment
TV antenna predisposition
2 wall lights
Openable portlights and scenic windows
Roman curtains
Nr. 2 AC sockets
Vanity unit with seat

VIP'S HEAD

Located on starboard side of the VIP cabin with private entrance
Corian flooring in head
Laminate wall panels
Washbasin with water mixer
Bathroom counter top in Corian
Mirror
Cabinet underneath the sink
Air extractor in shower
Shower support with adjustable height and shower head on ceiling with mixer
Corian flooring in shower area
Shower Plexiglas glass enclosure
Electric toilet
LED spotlights
Toilet accessories
One portlight and window in shower with venetian blind
One portlight and window in toilet area with venetian blind
Nr. 1 AC socket

GUEST CABIN

Located on port side
Carpet flooring
Access to guest head
Twin beds with underneath storages
Mattresses
Nightstand between two beds
Full size wardrobe with hanging space mirror and shelves
TV antenna predisposition
One portlight and scenic window
Roman curtain
Led spotlights
1 wall light
AC socket

GUEST'S HEAD

On port side with direct entrance from guest cabin and corridor storage area corner
Corian flooring in head
Laminate wall panels
Washbasin with water mixer
Bathroom counter top in Corian
Mirror
Cabinet underneath the sink
Air extractor in shower
Shower support with adjustable height and shower head on ceiling with mixer
Corian flooring in shower area
Shower Plexiglas enclosure
Electric toilet
LED spotlights
Toilet accessories
1 portlight and window in shower with venetian blind
1 portlight and window in toilet area with venetian blind
AC socket

AFT STORAGE AREA

Access via Opacmare pantograph door on the stern
Window and portlight on stern
GRP anti skid floor
LED spotlights
Opacmare door for entrance to engine room
Storage area

LOUNGE AREA (optional 4th Cabin)

C Shape sofa on starboard side of lower deck forward of stairs
Storage area under the sofa
Hull window behind the sofa
Porthole opening on window
TV installed on the cenral wall of port side guest cabin

CREW QUARTER (optional instead of AFT STORAGE AREA)

Access via Opacmare pantograph door on the stern
Access door to engine room
Kichenette area with sink (space for optional refrigerator and optional microvawe)
Sofa for 3 people on portside
Two bunkbeds with storage underneath
Wardrobe near the beds
Shelves on the aft side of the beds
Mattresses, pillows and bedspreads
Window and portlight on stern
GRP flooring
Curtain
Nr. 1 AC socket
Nr. 1 USB socket
LED spotlights
Access to head from crew cabin
Electric toilet
Carbon monoxide alarm
Washbasin with water mixer
Toilet accessories
Mirror
Nr. 1 AC socket

ELECTRIC SYSTEM

All cables and conduits are halogen-free and self-extinguishing. Cross sections are calculated to ensure allowable voltage drop
Bouding system consists of 4 sacrificial anodes (two on stern, two under engines). Cables are tin plated copper to minimize corrosion.
Grounding system joins all electrical circuits for safety. It includes galvanic isolator to prevent galvanic corrosion from shore connection.
230V AC – 50Hz with 63A shore connection
24V DC – 12V DC with negative grounded
Electrical panels with switches and instruments in engine room, steering area and lower deck cabins
Mastervolt AC Master 1500W Inverter , 24/230, 50Hz

GENERATOR

Nr. 1 Cummins Onan Generator 9,5 kW-50Hz placed in the engine room

PROPULSION SYSTEM

2 x VOLVO D13 900 HP Engines with V-drive ZF 335 IV Gearbox (ratio 1.964:1)
70mm diameter Marinox 25 Duplex shaft with 10 degrees angle
Aluminium bronze shaft support 860x770mm
5 blades Nibral Teignbridge Propellers
PSS shaft seal

STEERING & MANOEUVERING SYSTEMS

Servo electric power assisted steering system and autopilot system
Rudder blade in aluminium bronze Servo electric power assisted steering system and autopilot system
Dynamic automatic trim control via Interceptor
10,5 kW variable bow thruster- 24VDC, D. 250 mm

SHORE POWER CONNECTION

Shore power socket 230V-63A
The power lines are protected by dedicated RCBB circuit breakers
15 meter shore connection cable

BATTERIES

10 Mastervolt batteries - 130Ah-12V, including: 6 for services, 4 for engine start
1 Mastervolt battery 95Ah 12V for generator
1 Mastervolt battery charger 12V 25A for generator starting battery
1 Mastervolt battery charger 24V 100A for service batteries
1 Mastervolt battery charger 24V 30A for engines starting batteries

BILGE SYSTEM

Nr.1 x 24 V Electrical Bilge Pump in engine room
Nr. 2 x 24V automatic Electrical Bilge Pump 24V in the accommodation area
Nr. 1 manual bilge pump located at aft deck under mooring area. Two suction areas through a valve, one suction at accommodation area, one suction at engine room
6 Bilge level alarms 3 bilge high level alarms
Engine room emergency pump through a diverting valve fitted on engine seawater cooling line
Each electric pumps can be manually activated by switches placed in the helm station

FIRE EXTINGUISHING SYSTEM

Seafire Novec manual and automatic extinguishing agent, located in the engine room, remote operated from the cockpit emergency switch panel.
Automatic shutdown system (engines, generators, engine room ventilation fans and fuel valves) with high temperature sensor in engine room.
Alarm panels on helm station and flybridge dashboards

FUEL SYSTEM

2 interconnected S.S. fuel tanks (total 5250 liters) in engine room
Fuel level indicators for each tank on monitoring system
Visual level gauge on port and starboard tanks
Nr. 2 filling ports on deckhouse sides
2 single VOLVO separation filters for engines
1 single Racor separation filter for generator

FRESH WATER SYSTEM

Nr. 3 HDPE tanks, 1.600 liters total capacity
Self-priming Gianneschi fresh water pump
Tank level indicator and empty status integrated in the monitoring system
80 liters water heater 220V-1200W
Hot and cold water in all head rooms, galley, cockpit, flybridge sink and fly shower
Cold water outlet in engine room
Filling cap at fore deck
Shore fresh water connection

BLACK WATER SYSTEM

Electric toilets with built-in macerators
Nr. 1 HDPE tank 400 liters capacity
Tank level indicator integrated in the monitoring system
3/4 and full tank indication in the heads
Fresh water toilet flushing
Holding tank discharge via suction on deck starboard side walking area.
Overboard discharge of waste water, via a dedicated line at the exit of the holding tank

GRAY WATER SYSTEM

Nr. 1 HDPE tank 500 liters capacity
4 sump tanks
3/4 and full tank indication in the heads and galley
Water drainage from showers and sinks into tank
Level sensor integrated in the monitoring system
Water drainage via manifold
Manual / automatic overboard discharge

SEAWATER SYSTEM

Nr. 2 sea water intakes with filters and valves for engine cooling system
Nr. 1 sea water intake with filter and valve for generator cooling system
Nr. 1 sea water intake with filter and valve for chain wash and deck wash system

ENGINE GAS EXHAUST SYSTEM

Water-cooled engine exhaust, thermal-insulated stainless steel manifolds, fiberglass muffler integrated into the hull structure, submerged outlets, and bypass line on hull sides

VENTILATION / EXTRACTION

Air inlet and outlet openings with a GRP cover on hull sides.
Nr. 2 24V Gianneschi air inlet fans at port side ventilation channel
Nr. 4 24V Gianneschi extraction fans starboard side ventilation channel
Mist eliminator at each channel

OTHER EQUIPMENTS

Six 12 meters mooring lines in 18mm diameter
Nr. 8 fenders with 8mm diameter lines
Nr. 4 leather fender hook
Fender covers with Sirena Yachts logo
Owner's manual

Sirena Yachts reserve the right to change specification without any prior notice.
Effective from 9st April 2021 **REV.01**

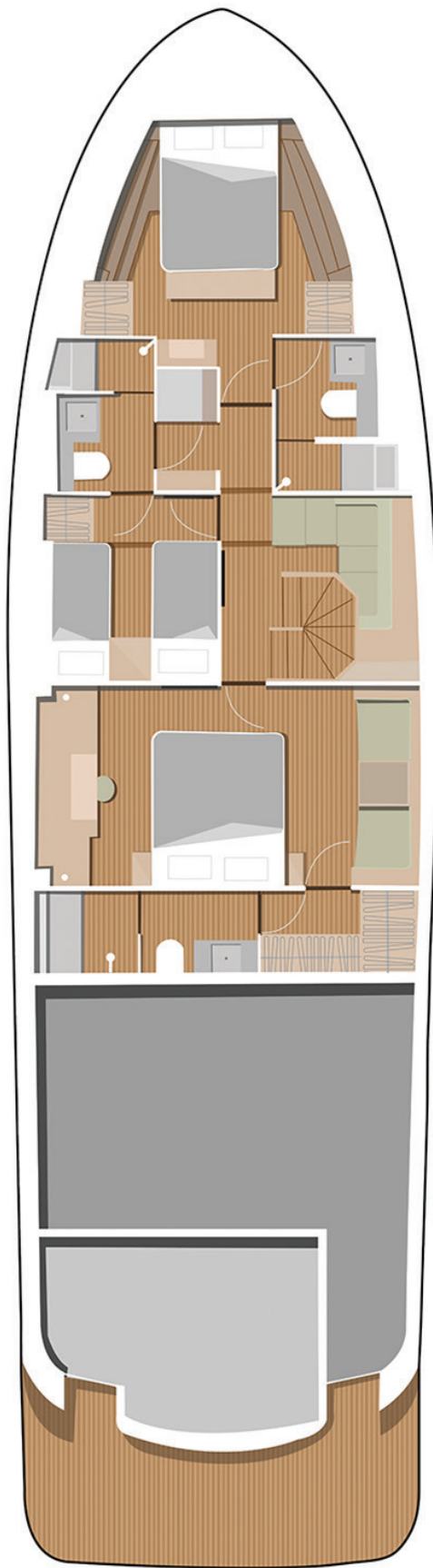
Sirena 68 - Flybridge



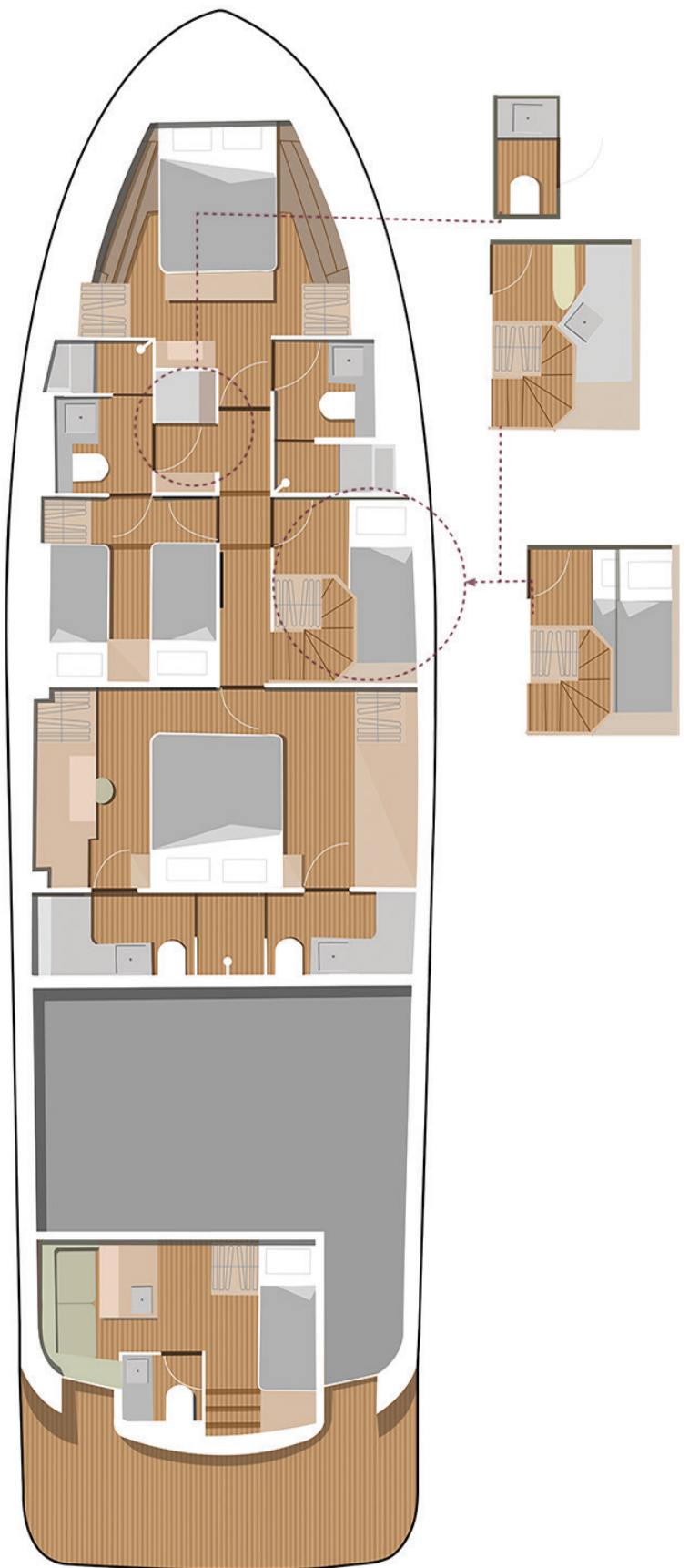
Sirena 68 Main Deck



Sirena 68 Standart Layout



Sirena 68 Option Layout



SIRENA  YACHTS

A brand of  SIRENA MARINE