



OCEANCLASS | 68



*A class of its own*



# From the project to the launch

THE CONCEPT. THE TECHNOLOGIES. THE HANDCRAFTED TOUCH.



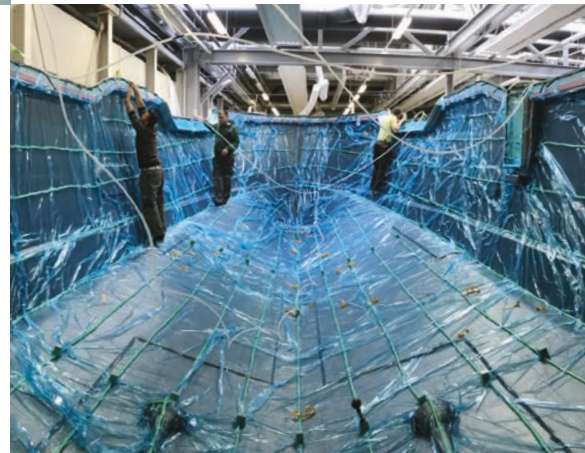
## It starts with a sketch

Ideas are born in minds, but it is on paper or more often, on a computer, where they have to prove their plausibility to then truly come to life. Our team of engineers and designers meticulously study every detail in order to ensure the best possible outcome: a safe, comfortable and elegant boat.



## Infusion Technology

Since its inception, Greenline Yachts adopted vacuum infusion technology. There are several benefits compared to traditional hand lay-up such as optimal amount of resin used in the process resulting in optimal weight and stiffness, higher quality of materials used (osmosis proof vinyl ester resin) as well as being environmentally friendlier.



## Tooling and prototyping

Highly sophisticated tooling forms the basis for a very efficient and streamlined production process - arguably one of the most advanced worldwide.



## Handcrafted

Tradition and experience means a great deal in boat building. OceanClass Yachts are built by some of the most skilled and experienced craftsmen, based on centuries of local boatbuilding tradition and over half a century of composite boatbuilding experience.



## High level customization

At OceanClass shipyard, the doors are always open for our customers. Before and during the purchase process, they come to select the materials, test the electronics and personally follow the building process of their boat.



## Custom made

From hull color to furniture wood and upholstery, the future OceanClass owners can customize their vessels according to their personal preferences. While wide array of materials is already on display in our showroom in Begunje, the fulfilment of special requirements can also be arranged.





# OCEANCLASS | 68

## Not all yachts are created equal

The flagship from SVP Yachts, designed by J&J Design, one of the most respected naval architect houses, the OceanClass is part of a new generation of motor yachts designed for those seeking something more than is generally on offer from the production brands. Semi-customizable to your exact specifications, with beautiful lines and superior sea-keeping characteristics, this RCD Cat. A motor yacht is designed from the waterline-up to offer something unique.

•

OceanClass is SEAWORTHY. It is created with a centered superstructure and a lowered center of gravity, which allows it to cope with heavy weather and oceans.

•

OceanClass is FAST and easily maneuverable. Integrated with an easily driven hull which uses less fuel, pollutes less and increases the range of the yacht.

•

OceanClass is FREE. When cruising for extended periods, escaping the hustle of a marina is a rare pleasure. The OceanClass range is designed to provide 120V power at all times via the innovative domestic power systems. No generator or shore power required.

•

OceanClass is ELEGANT and preserves traditional marine aesthetic exteriors. As a semi-custom build motor yacht, you will work with an interior designer to come up with perfect mix of fabrics, woods and finishes to reflect your individuality.

**No two OceanClass owners are the same, so why should the boats be?**



See how it works on  
[greenlinehybrid.com](https://greenlinehybrid.com)

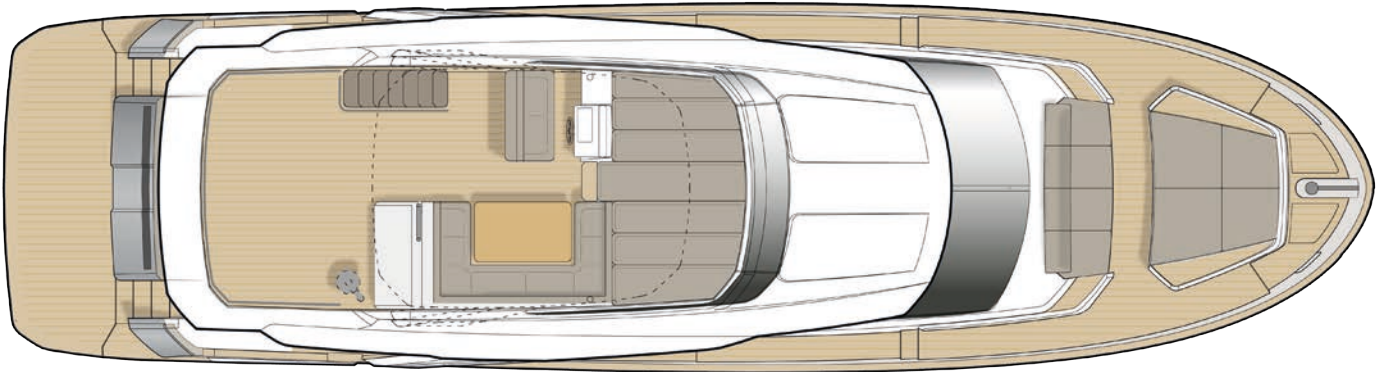




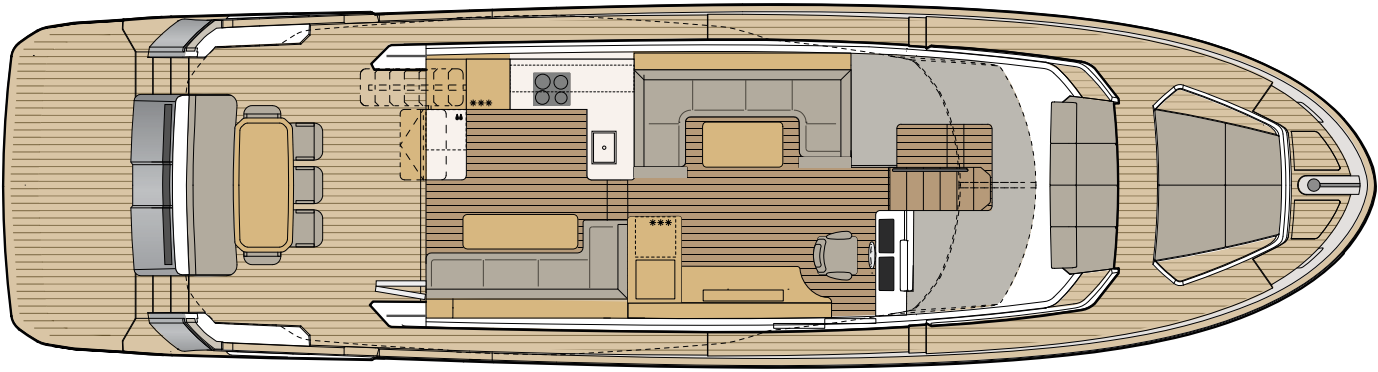
OceanClass 68

3 cabin + skipper (single berth)

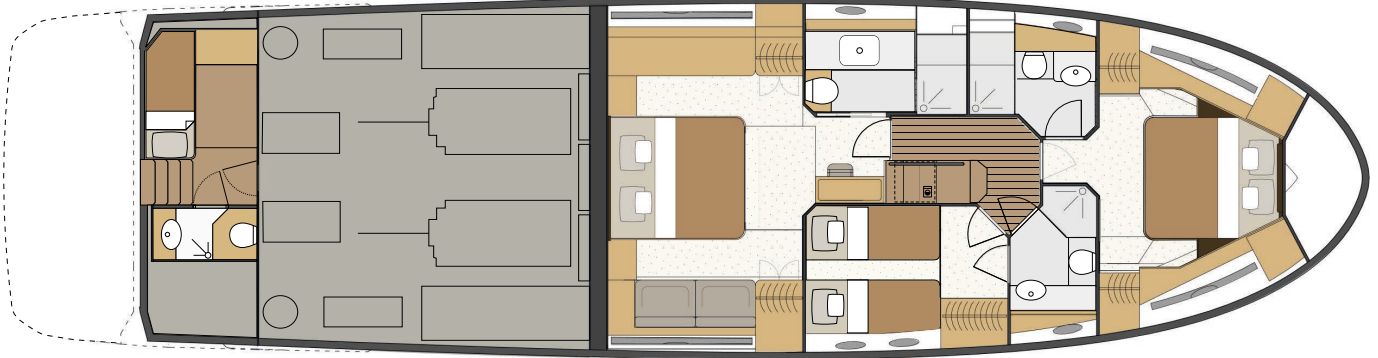
FLYBRIDGE



MAIN DECK



LOWER DECK



Technical specifications

Standard dimensions

Length overall	20,80 m	68'3"
Beam overall	5,45 m	17'11"
Bridge clearance (incl. hard-top)	5,71 m	18'9"
Draft empty	1,4 m	4'7"
Displacement empty	28.000 kg appr.	61.729 lbs
Cabins	3 + Salon + Crew	
Berths	6 + Skipper	
Toilets/washrooms	3	
Diesel tank	4.000 l	1.056 gal
Water tank	1.000 l	264 gal
CE category	A	
Design	J&J Design	

\* Displacements are calculated with 50% fuel and water plus liferaft but with no optional equipment or other gear fitted.  
\*\* Depending on selected equipment and propulsion.  
\*\*\* Maximum speeds will vary depending on cleanliness of hull, condition of stern gear, craft load, water and air temperatures, sea conditions and other factors. Speed estimates are therefore given in good faith but without any warranty or liability on the part of SVP Yachts.  
For more information and detailed standard specifications please contact your local dealer.

Hybrid Drive

Electric motor	2 x 60 kW
Battery capacity	142 kW/h
Max speed electric mode	8 kts
Range in electric mode (5kts)	up to 15 Nm
Diesel engine	2 x 1000 Hp
Max speed diesel mode	25 kts
Generator in diesel mode	2 x 50 kW

Solar / Power management

Solar panels	900 Watt
--------------	----------

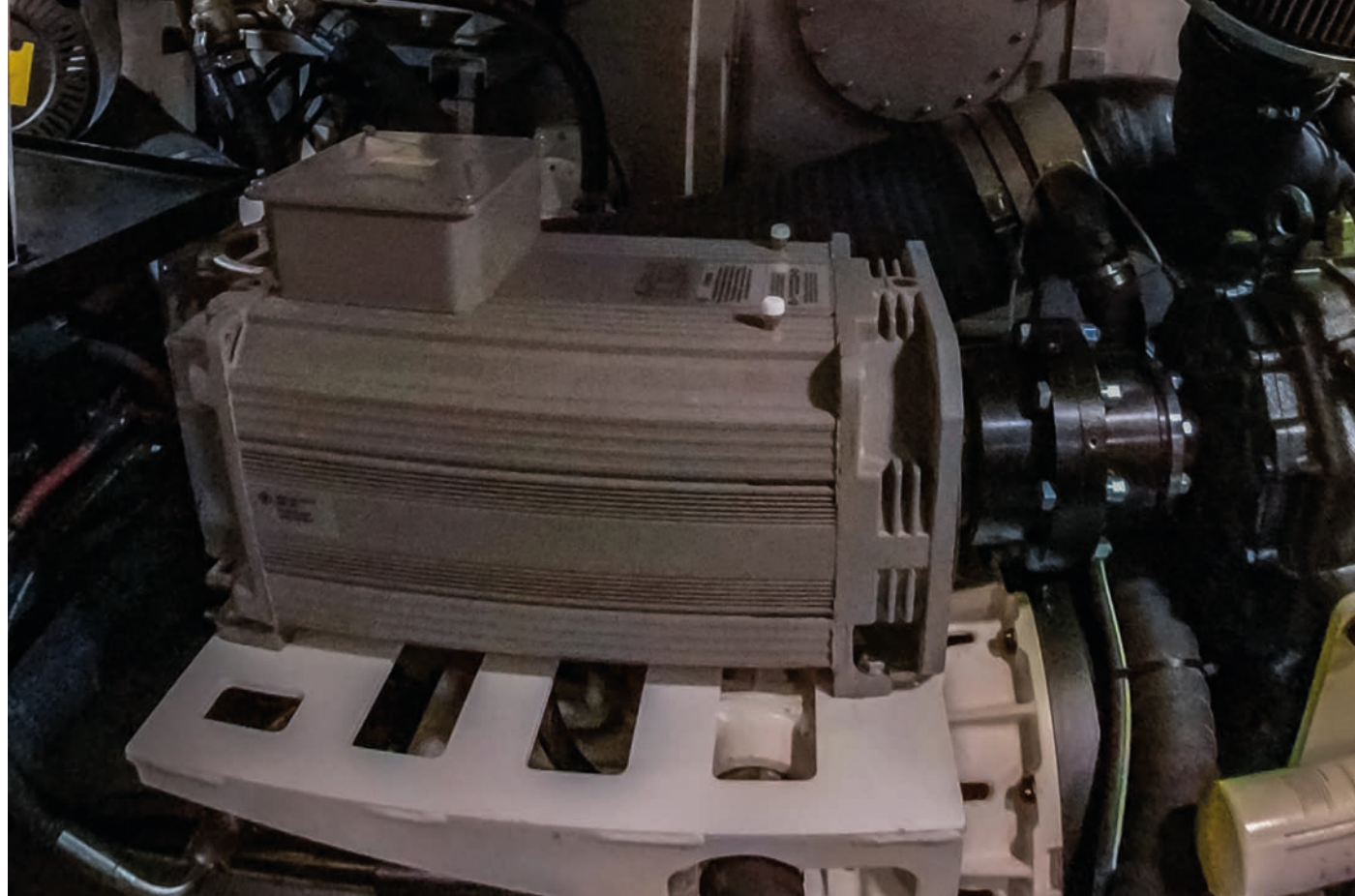
Features

- Solar panels
  - CAT 1000 HP Engine
  - Silent eco-navigation
  - Lifting swim platform
  - Sheltered cockpit and sidedecks
  - 230/120V AC power at all times
  - Open galley
  - 3 x bathroom
- Natural light and 360° panoramic view in the salon

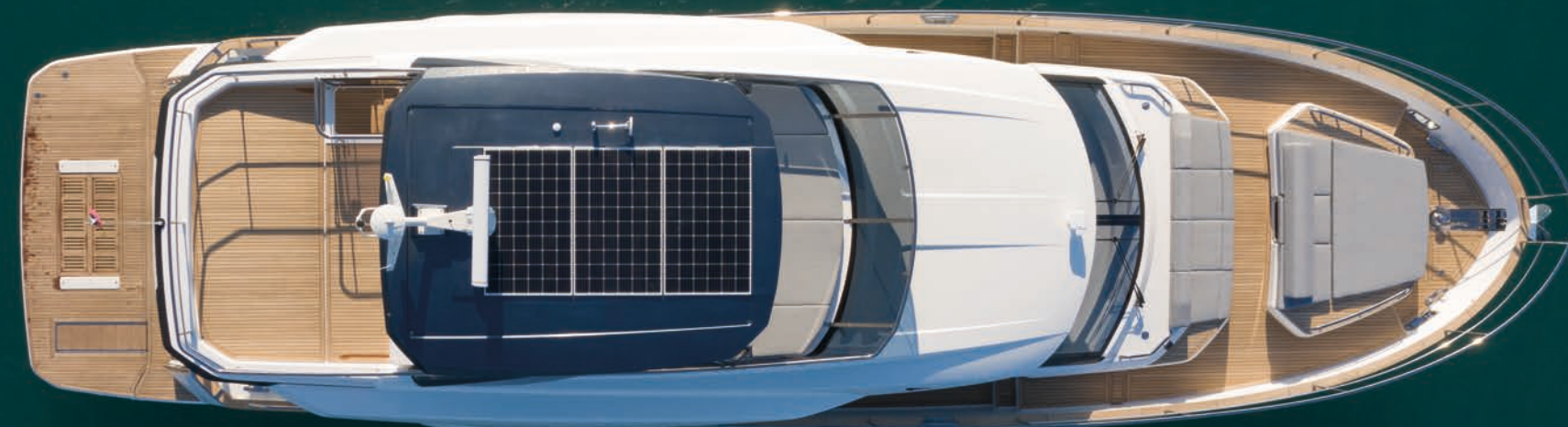




2 x 60 kW electric  
motor/generator



2 x 1000 HP CAT  
Engines 12.9



Hard-Top with  
3 solar panels  
(900W)







Main Helm

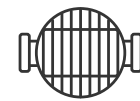


Flybridge Helm



Full SIMRAD  
navigation package

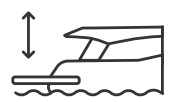
Hard-top incl. solar  
panels and HALO  
radar



Double grill (BBQ),  
refrigerator and  
ice maker



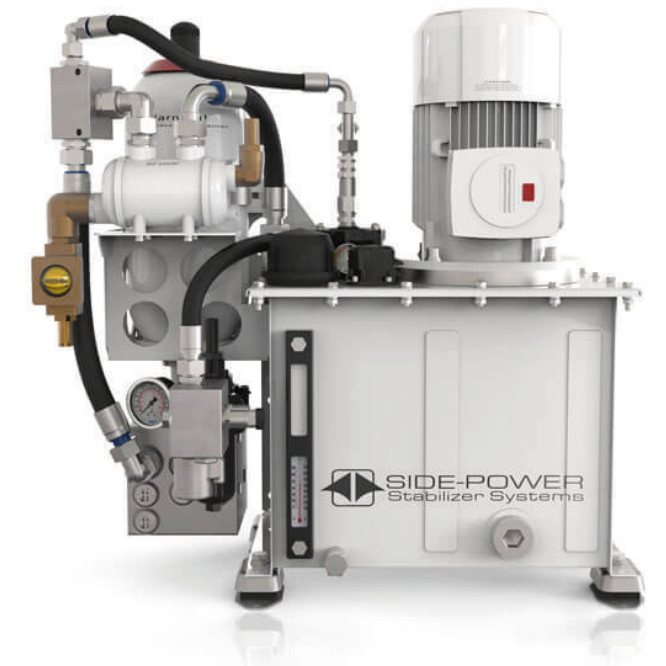




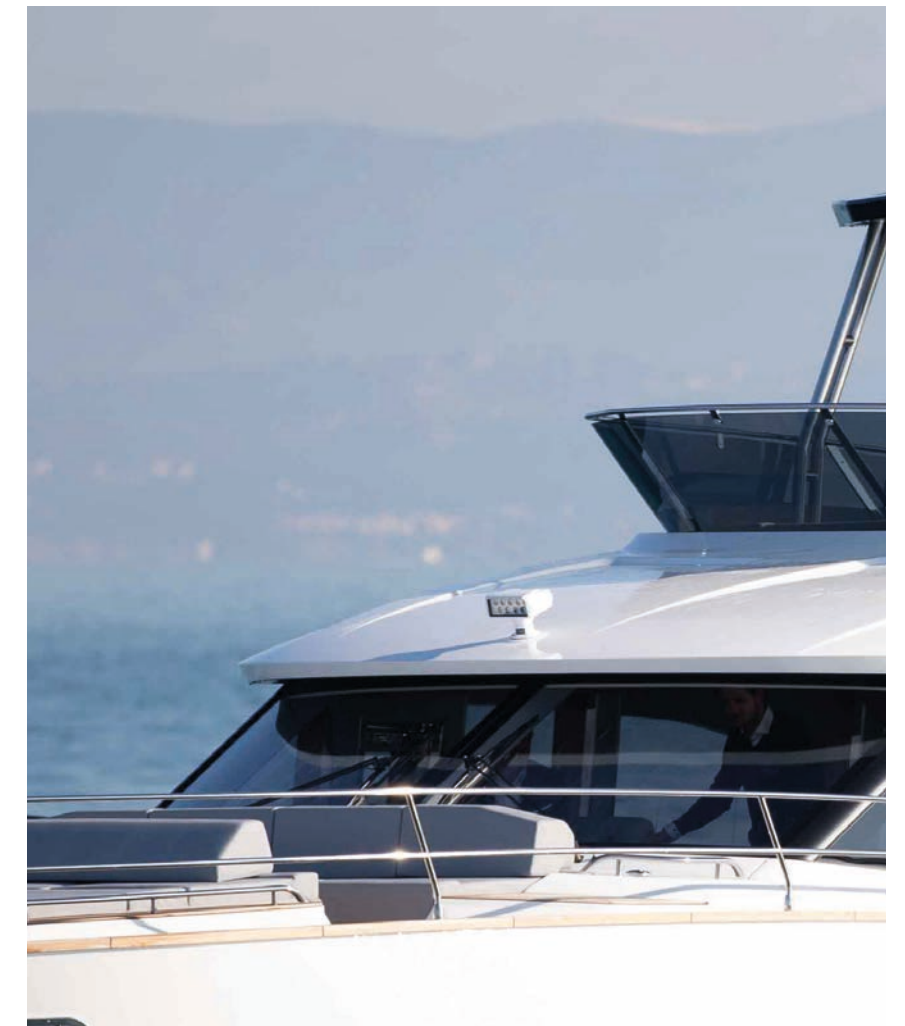
Hydraulic swim platform



Stabilizer Fins



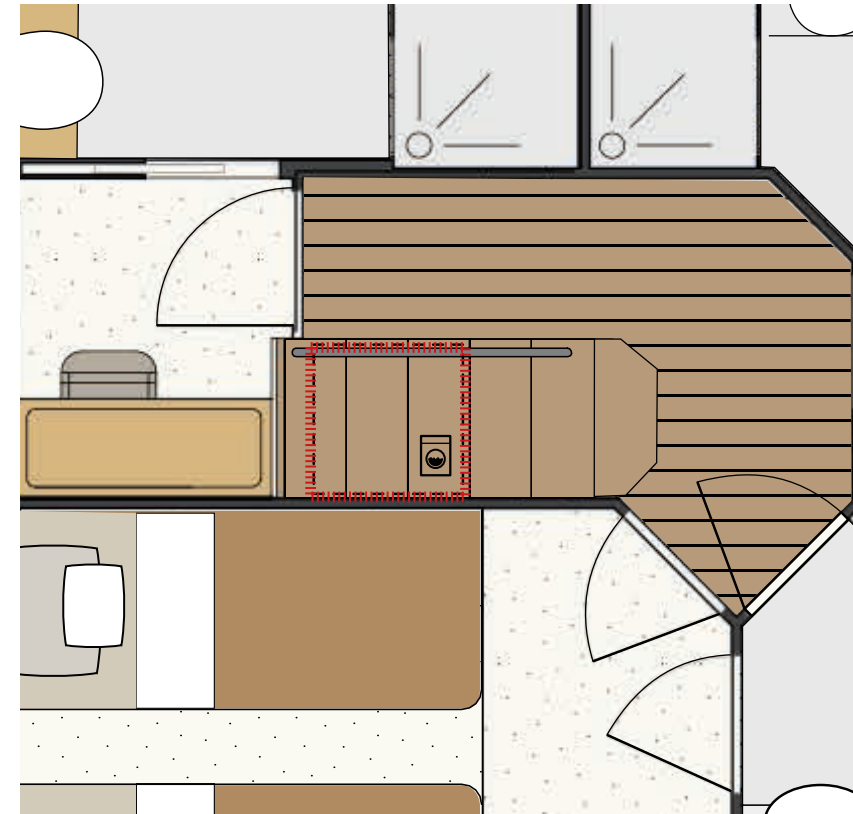
Searchlight







All protective covers

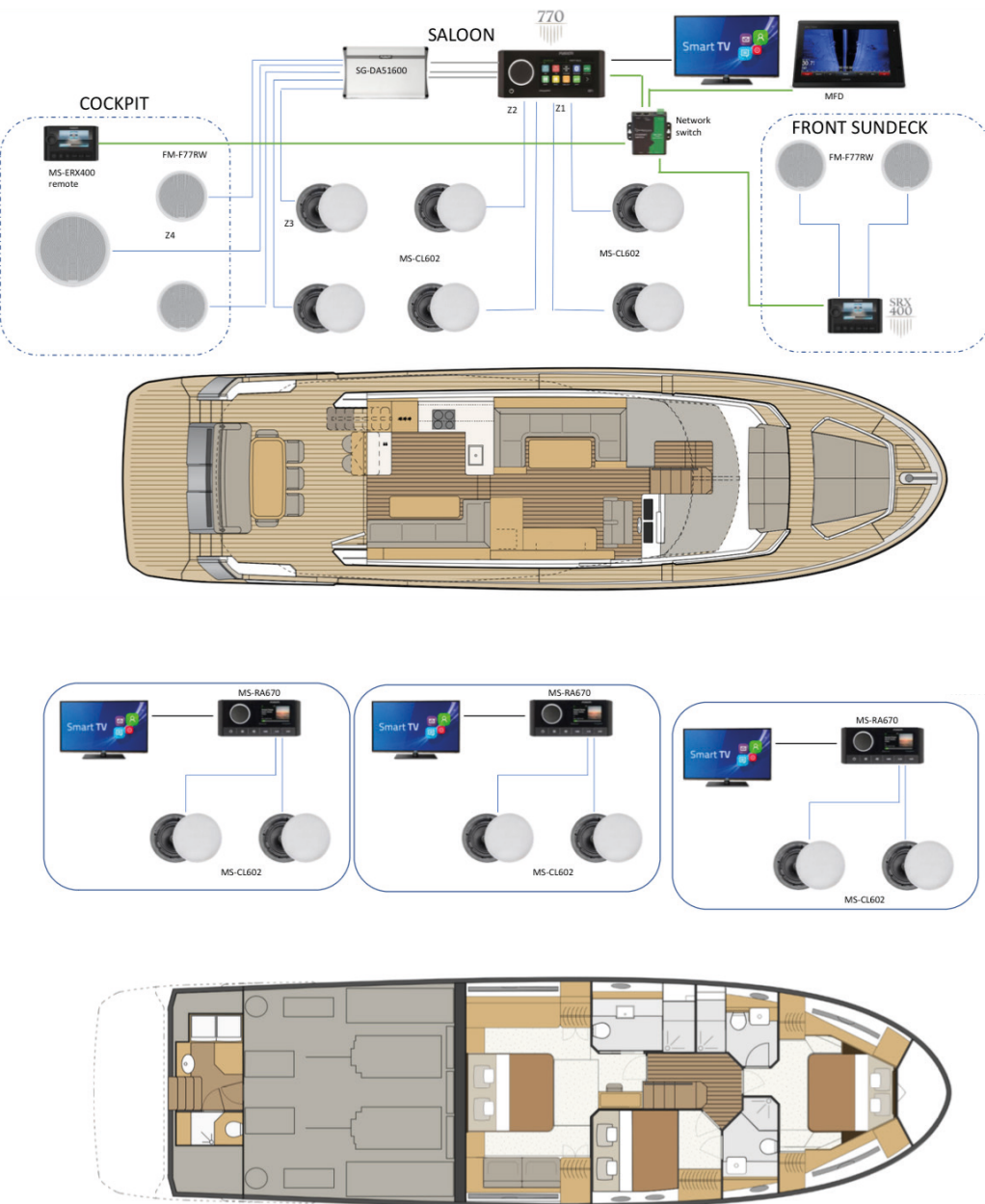
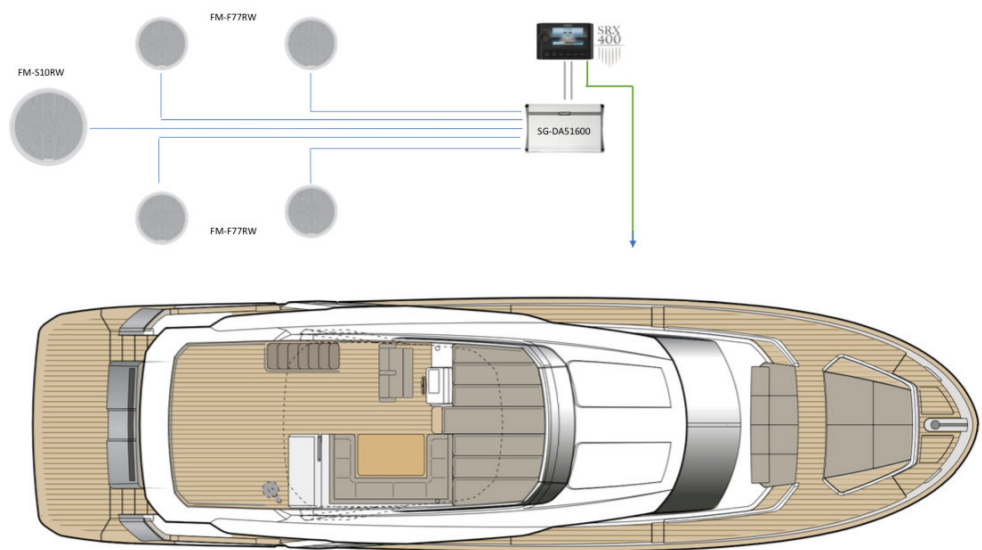


LG washer/dryer located under stairs in lower deck





Upgraded Fusion  
sound system



Underwater lights with  
color change

Lights in cockpit ceiling  
and side decks







# Miele

## All Miele kitchen appliances

- wine chiller
- built-in refrigerator
- ice maker in freezer
- induction cooktop
- extraction hood
- oven
- dishwasher







Locker with 49" LCD TV and lifting mechanism to starboard side



TV's in all cabins

VIP Cabin



Master Cabin

Guest Cabin







Electric lifting storage



Luxury crystal glassware set



Bow lounge area with Portuguese bridge, seating and sun bed

One pop up ambient light on both sides of Portuguese bridge







Storage areas under the sunpad and the sides



Tinted side windows for sun protection



2 electric capstans aft for handling of aft mooring lines with foot controls



Fully opening salon windows made of tempered glass



Helm



Upholstered helm seat with steering wheel



Starboard side door

Flybridge



Upholstered helm seats with steering wheel to port side



Large upholstered U-shaped sofa with fixed teak table







Large upholstered  
suntanning area



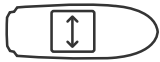




En suit master bathroom  
with separate shower



Master Cabin



Full beam mas-  
ter midship cabin







VIP Cabin



En suit VIP bathroom  
with separate shower





Guest Cabin



Guest bathroom  
with day-head  
access



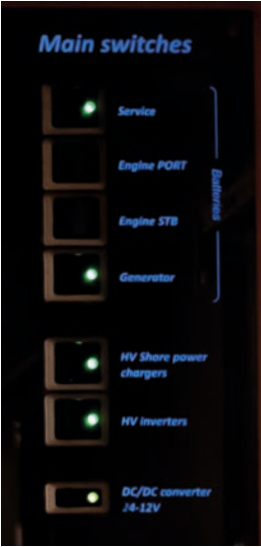




Electrical system and equipment



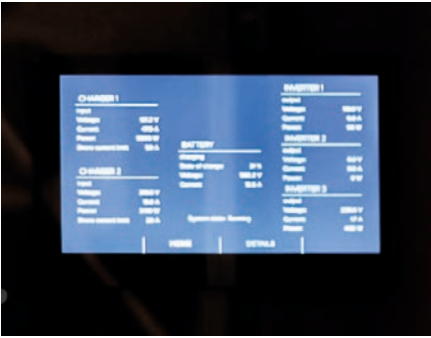
Circuit breakers for 24V consumers



Main switches

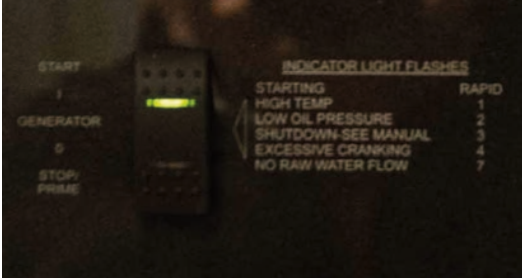


Control panel for tanks and electrical consumers



Black water tank switch

Control panel for chargers and inverters. It shows two chargers and 3 inverters.



Generator control panel



Circuit breakers for 120V consumers



Control panel for SEAFIRE fire protection system



