



**SIRENA 78**



**SIRENA YACHTS**



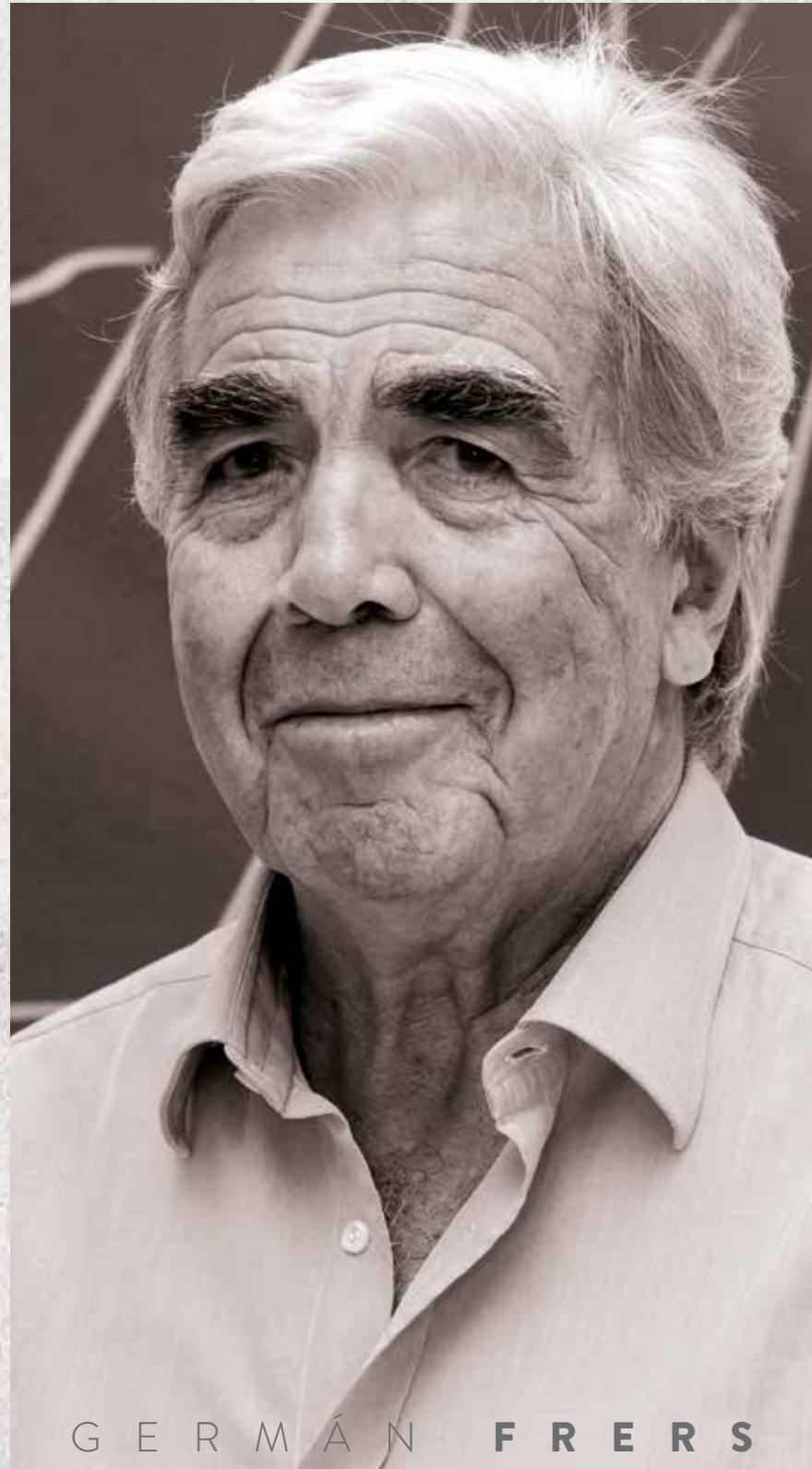
## THE SIRENA 78 TURNS THE IDEA OF A DO-EVERYTHING YACHT INTO REALITY. *CHOOSE YOUR OWN COURSE*

The Sirena 78 is the latest launch from Sirena Yachts, and is a culmination of our design, engineering, craftsmanship, finishing, and careful attention to detail. Sirena has always worked with customers to understand their desires for capabilities and comfort level and to exceed their expectations. The hulls are designed to offer incomparable interior volume for their size, and Sirena's designers create inviting spaces with lines of sight and the use of natural and artificial light in combination with finishes and fabrics. The Sirena 78 is the latest stage in the company's evolution, where a choice of flybridge configuration is added to a long list of features designed and crafted to suit the needs of her owners from the day she's launched.



 **SIRENA 78**





G E R M Á N F R E R S

“ Our design work is backed by our solid racing and cruising tradition at sea and a clear understanding of the enjoyment and peace of mind that life on board yields, which can be taken to a higher degree by the beauty and functionality of the design. ”

Sirena 78 is the latest model in the line of successful luxury motor yachts from Sirena Marine.

The exterior design shows smooth lines and an improvement of the aerodynamic coefficient as well as practical features improving the comfort associated with a four-cabin interior layout including two double cabins, the owner and the VIP, two in-suit twins cabins plus two independent crew cabins.

At the main deck level there is a full height window main saloon, which, in combination with the bulwark side openings, yields a very nice view to the elements from the living and dining areas. The galley is forward, behind the bridge.

The deck corridors are ample for good circulation between the forward and aft sitting areas.

A new upper deck features various options, from an open to a fully enclosed “Bimini” with direct access from the interior.

This is the sixth model we design for Sirena Marine. We are proud of being associated with the Firm known for their excellent workmanship and very high value.

Welcome home!

**Germán Frers**

A stylized, handwritten signature of Germán Frers in black ink.



# CHOOSE YOUR OWN COURSE

The Sirena 78 offers creative enhancements that signal an even more rapid evolution of design and innovation to improve the on-the-water experience. She effectively advances the idea of the cruising yacht by delivering a combination of interior comfort and a wide range of efficient performance. Her construction and finish meet at the intersection of advanced technology and craftsmanship, just as they did for her stablemates in the Sirena line, and yet the Sirena 78 takes next-generation thinking into every curve and corner of her design. It starts with the design, which boasts several options for the flybridge, a feature that has evolved as a hallmark element of the line. The flybridge is a key element on nearly all Sirenas, thanks to the space and views it makes available, as well as the overhang that provides delightful shade for the afterdeck.





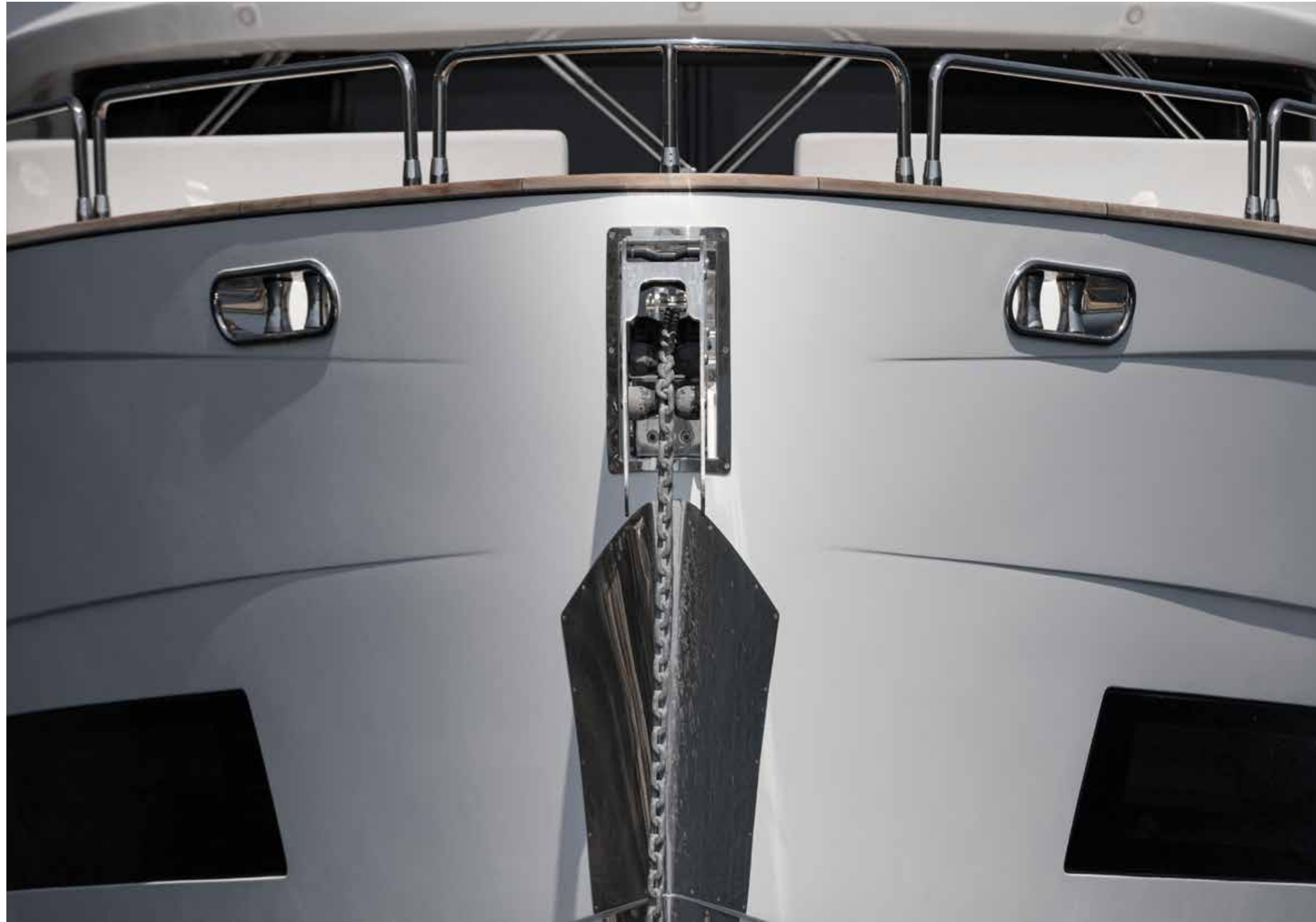


## SLIPPING THE FAMILIAR BONDS

The Sirena 78 delivers cruising without the usual limitations one sees. While that hull shape is distinctive in shape, it also adds further distinction: Performance and efficiency across a broad speed curve. If her owners want to cruise far and wide, and push beyond their typical area, they can throttle back and enjoy excellent range. If the desire is to shorten the time on the water and increase the duration of the visit at their destination, then throttle up and enjoy the thrill of high-speed travel. These options are also reflected in the many gathering areas throughout the yacht. Whether your family and guests wish to be outdoors in the bright sunshine of the bow area or swim platform, under the shelter of the flybridge hardtop or afterdeck overhang, or cosseted in the comfort of the saloon or skylounge, these are the decisions at hand.











# THE LUXURY OF CHOICE

The Sirena 78 offers a choice of three different configurations for the flybridge. The upper deck has always played an important role in the design of most models, offering a combination of features including extensive seating areas, hardtop designs, a refreshing shower built in, dining areas, and a helm station that allows the helmsman to be part of the conversation. Add to that the incomparable views, elevated vantage point, and delightful breezes, and the flybridge quickly becomes a favorite among friends, family, and guests. Now Sirena Yachts has taken the appeal of the flybridge in exciting new directions: There are now on offer a fully enclosed configuration, a semi-enclosed version, and the familiar open version.

The open version gives the owners and their guests the appeal of an open-air veranda on which to spend time aboard, either underway or at anchor, or even on the dock or mooring. Because of its height, the flying bridge affords a measure of privacy when in close quarters, and it really shines in secluded anchorages, where the light plays on the water and the views are unforgettable.

The semi-enclosed version offers the advantage of the protected helm station, so the helm is eliminated from the main deck. This ensures even more space available for the designers to express their creativity in meeting the owners' needs. On the flybridge itself, the open aft bulkhead gives an exquisite indoor-outdoor feel that puts guests at ease, with enormous side windows that open to enhance the ventilation on pleasant days.

For cruisers who rely on the flybridge as additional space even as they push their itineraries farther into the shoulder seasons, the fully enclosed configuration offers the option of true protection when the weather is cooler and the storms come through more often. Still the enormous windows open for fair weather. Without the main-deck helm, this layout offers additional onboard space that can change the way the yacht is used, and the owners' imaginations are the only limit to the cruising season.



# PROTECTION FROM THE ELEMENTS

The flybridge adds more than just an upper deck to any yacht. It creates a space where people simply like to spend time together. It gives the helmsman a superior vantage point from which to navigate. Simply put, it elevates every aspect of the onboard experience, and this is the case with the Sirena 78, where two versions of the design include an enclosed flybridge. The fully enclosed flybridge creates a space that is climate-controlled and offers complete protection from the elements. The semi-enclosed flybridge is a similar setup, but without the aft bulkhead, so the space is open to the aft area of the deck. No matter what design is chosen, both layouts offer open access to fresh air through huge side windows that open. And both configurations also help to open up the lower deck by eliminating the need for a lower helm station.







## WELCOMING THE SEA BREEZE

A truly open flybridge creates a feel that is unlike anything else one can experience on a motoryacht. The idea of enjoying all around views and full exposure to the soft zephyrs of the sea: the sights, sounds, and scents of the location around the boat—all of these add to the experience. Sirena has understood the appeal of an open flybridge and has provided it on nearly every model since we began. The Sirena 78 is no different, and it exhibits several lessons that we have learned along our storied yacht building history. First, the ways that owners and their guests will use the flybridge has a direct correlation to their enjoyment of the boat, and in good weather, the open flybridge is impossible to beat. Even the best open flybridge can benefit from a good, robust hardtop with key design elements, including an opening section, sturdy pipework, and a built-in shower.





## ALL CHOICES ARE THE RIGHT CHOICE

NO MATTER WHICH DESIGN  
IS CHOSEN, THE FLYBRIDGE  
CREATES WELCOMING  
GATHERING SPACES WITH  
MEMORABLE VIEWS FOR  
FAMILY AND FRIENDS  
TO ENJOY AN EXCITING  
CRUISE TOGETHER.





COR D. ROVER

“ I TRY TO REDISCOVER  
WHAT NEVER EXISTED ”

*Cor D. Rover*

**Timeless, luxurious and innovative exterior-interior yacht design.**

The birth of the Sirena 78 is the natural consequence of the success of both the Sirena 68 and 88. She literally fills the gap between these smaller and bigger sister ships, in terms of content, level of luxury and refinement.

The evolution it has undergone is stunning. All the good qualities have been further crystallized into the recognizable style of the Sirena series; the visual identity is unmistakable and has been carried through in all three design directions. Inspiration, Serenity and Elegance.

Fully in line with today's zeitgeist, the 3 design directions focus on comfort, simplicity and elegance. The attention to detail does justice to all the individual rooms, but also exudes a certain tranquility through the clear balance of light, material and design.

The toned-down color schemes create a natural coherence that feels harmonious and peaceful, and leaves enough room to add your personal touch.

Special attention has been paid to the communication between the interior and exterior spaces, making the yacht feel even more spacious than it already is. The open galley concept supports this experience even more....

The Sirena 78 is the perfect yacht to bring out the best in yourself in a casual environment equipped with all conveniences.

Spend some time with your friends and family and ENJOY.



# CHOOSE YOUR OWN COURSE

The Sirena 78 creates interiors that are different from those of other yachts by using furniture that is not fixed to the deck or bulkhead. This allows the owners and their guests to alter the position of tables, chairs, and lounges to accommodate their needs at that very moment. While it sounds simple, this is an elevated experience, one that's more evocative of how they live ashore, and it's possible due to the stable design and expansive interior spaces.







## LOOKING FORWARD TO TIME ABOARD

The Sirena 78 uses enormous windows throughout the main-deck saloon to offer views of the sea and the yacht's surroundings. The huge panes of glass admit vast quantities of natural light and let it play across the surfaces throughout the dining area, seating area, and galley, showcasing the carefully curated selection of fabrics and surface materials. The party can move seamlessly from eating and drinking forward to lounging in comfort aft, accommodating the needs of family and friends. And don't worry: as the sun descends, the design of the illumination scheme gently fills the space with manmade light to maintain the comfort and beauty of the scene.

The one feature most important is what's missing: There's no need for a helm station on the main deck, due the enclosed flybridge designs that offer year-round protection from the elements.





WHAT DO YOU WISH TO DO  
NEXT?

WOULD YOU LIKE TO SWIM,  
OR READ IN THE SHADE, OR  
GO TO SHORE AND EXPLORE  
THE BEACH? WHATEVER YOUR  
HEART DESIRES, IT'S ALL LAID  
BEFORE YOU.





# INNOVATIVE THINKING CREATES UNFORGETTABLE EXPERIENCES

The Sirena 78 makes the most of a design that seems to ask the most creative question, “Why not?” and then apply innovative thinking to transcend the mundane and obvious and arrive at a truly special yacht.

---

## INSPIRATION

The light, airy material and color choices of this design soothe the senses and invite the environment in. The indoor/outdoor feeling seems to disappear due to the natural transition of sunlight and indoor experience.

The pale and light gray colors almost give you a ZEN-like feeling...

The tranquility of the color scheme brings peace and contemplation.

At the same time, it challenges you to go out and explore...

---

## SERENITY

The light honey-colored wood and soft semi-gloss lacquer embrace you as you enter the salon. This warm and inviting atmosphere makes you feel right at home. Accents of cognac leather complete the warm and inviting look, creating the perfect atmosphere for making memories on the water with family and close friends.

---

## ELEGANCE

The bold dark wood and anthracite lacquer create a very masculine and energetic look without being heavy. A high contrast is created by the use of the finest white leathers and fabrics, resulting in an interior that feels stylish, yet contemporary and encourages you to push your limits... This modern look feels like an open loft and harmonizes with the colors of the yacht's exterior.



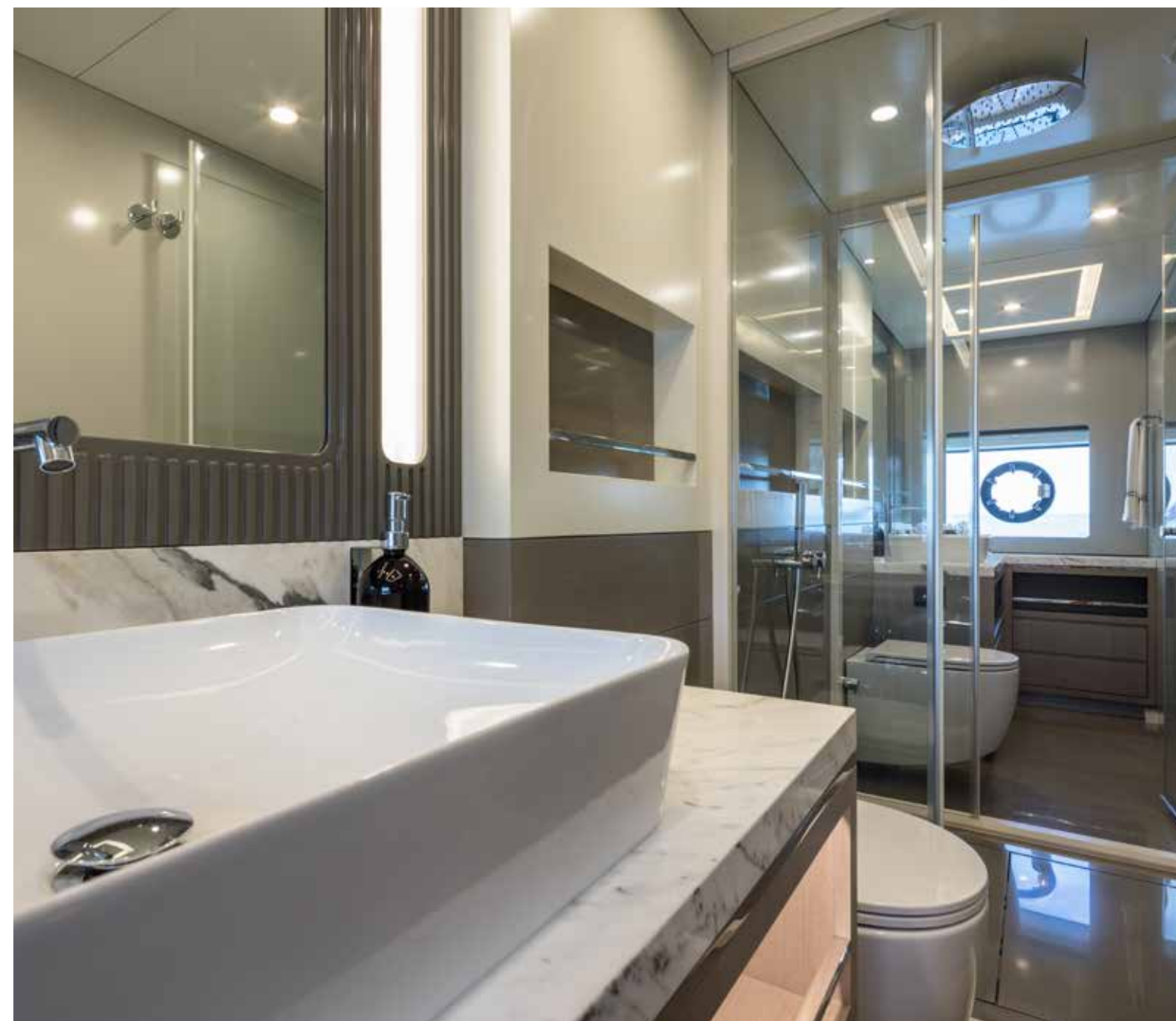


INSPIRATION



## MASTER CABIN

THE IMPRESSIVE FULL-BEAM OWNER'S SUITE OFFERS A PRIVATE BATH AND DRESSING AREA. WITH A KING-SIZE BERTH, LARGE HULLSIDE WINDOWS, AND PLENTY OF STOWAGE, THE SIRENA 78 REINVENTS THE SPACE WITH A PRIVATE EXPERIENCE FOR AN OWNER COUPLE.











## VIP CABIN

THE FORWARD VOLUME OF THE HULL OF THE SIRENA 78 OFFERS A TRUE OPPORTUNITY TO CREATE A SPACE THAT CONNECTS HUMAN-SIZE PROPORTIONS WITH THE TEXTURES AND ELEMENTS THAT MAKE ANYONE EXCITED TO ARRIVE, AND OVERJOYED TO RETURN, AGAIN AND AGAIN. IT'S A DELIGHT FOR THE FACULTIES AS THE EYES ARE DRAWN IN DEEPER, AND THE FINGERTIPS TRANSMIT CONGRUENT SENSATIONS. ANYONE COULD ENJOY THEIR TIME ABOARD HERE.









## TWIN CABIN

NATURAL LIGHT FROM A HUGE HULLSIDE WINDOW AND COMFORTING LINES OF SIGHT COMBINE TO CREATE A VERY HABITABLE GUEST SPACE FOR THE WAY PEOPLE RELAX AND UNWIND.



# THE LUXURY OF TIME ABOARD

THOSE WHO WISH TO MAKE THE MOST OF THEIR TIME ON BOARD WILL NEED TO BE SURE TO GET A VIEW OF EVERY DIMENSION OF THE YACHT. ANY OTHER WAY WILL FORESHORTEN THE EXPERIENCE AND NOT ALLOW ONE TO TRULY CHOOSE THEIR FAVORITE ASPECT OF THEIR TIME ABOARD.

LAZING ON THE AFT DECK WITH FRIENDS AFTER BREAKFAST OR SPENDING AN AFTERNOON PLAYING A BOARD GAME WITH THE KIDS ON THE FLYING BRIDGE MAY SEEM SIMPLE, BUT ARE THERE OTHER WAYS TO MAKE THE MOST OF YOUR TIME THAT ARE MORE GENUINE?







## CREATE THE NEW NORMAL

ONCE IN A GREAT WHILE SOME OF THOSE ABOARD MAY FIND THEMSELVES AT A POINT WHERE THE TRUE LUXURY IS FOUND NOT OUTSIDE OF THE YACHT, BUT EXCLUSIVELY WITHIN IT. IT MUST BE REMEMBERED THAT THE SIRENA 78 IS FIRST AND FOREMOST DESIGNED TO TAKE HER COMPLEMENT TO SEE NEW SIGHTS AND VISIT UNFAMILIAR PLACES TOUCHED BY THE SEA. DON'T LET HER DESIGN DETRACT FROM THE SURROUNDINGS. INSTEAD PAY ATTENTION TO THE WAY THE YACHT MAKES THE WORLD AROUND HER LOOK BETTER, AND MORE INVITING.

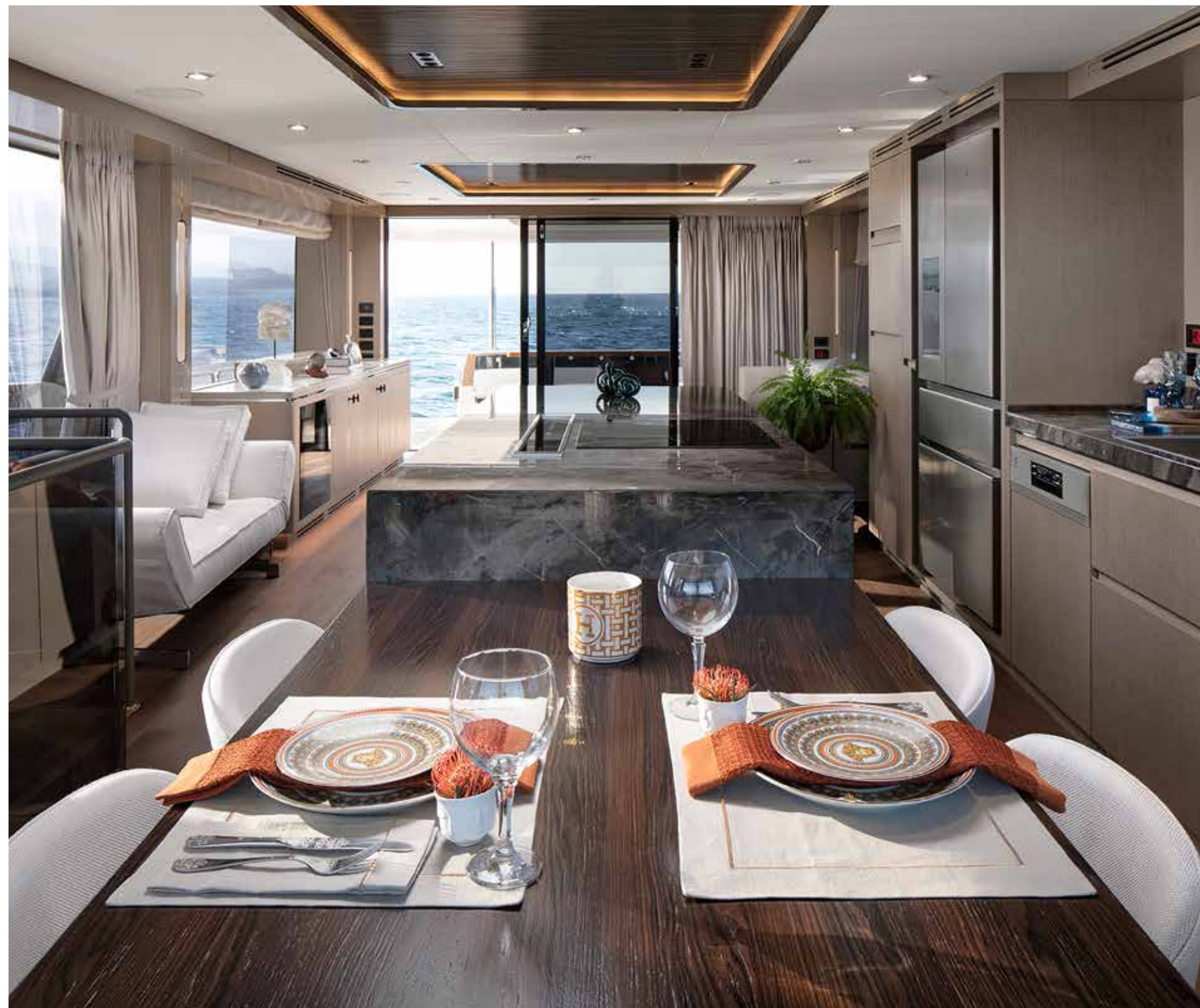




## TIME TO DINE

WITH A GALLEY THAT CREATES OPPORTUNITIES FOR SHARING— BOTH FOOD AND TIME TOGETHER—THE SIRENA 78 WILL TAKE ONBOARD ENTERTAINING TO AN ENTIRELY NEW LEVEL. MAKE THE MOST OF THOSE MOMENTS, THAT'S EXACTLY WHAT THEY'RE THERE FOR.

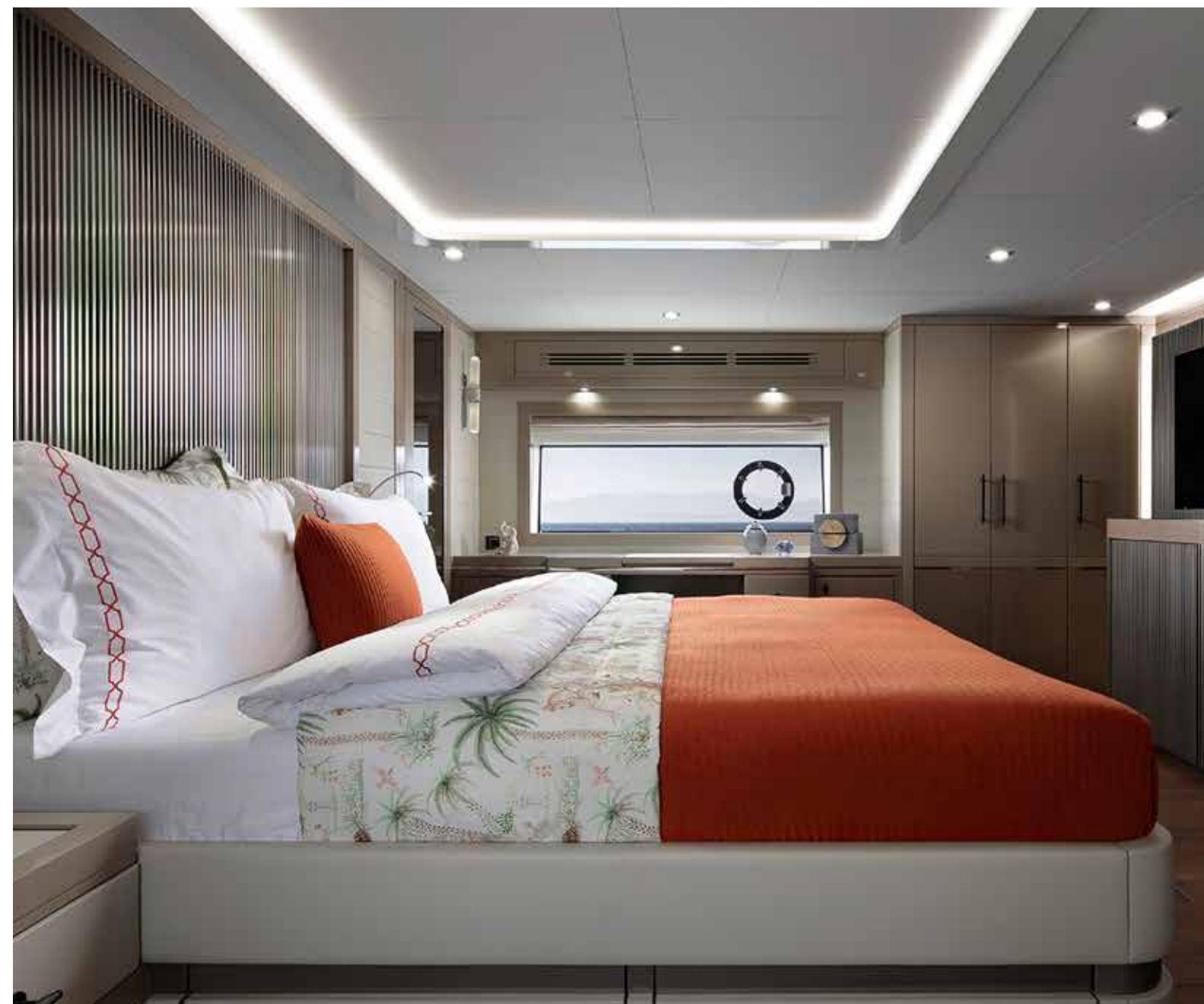




SERENITY



# MASTER CABIN



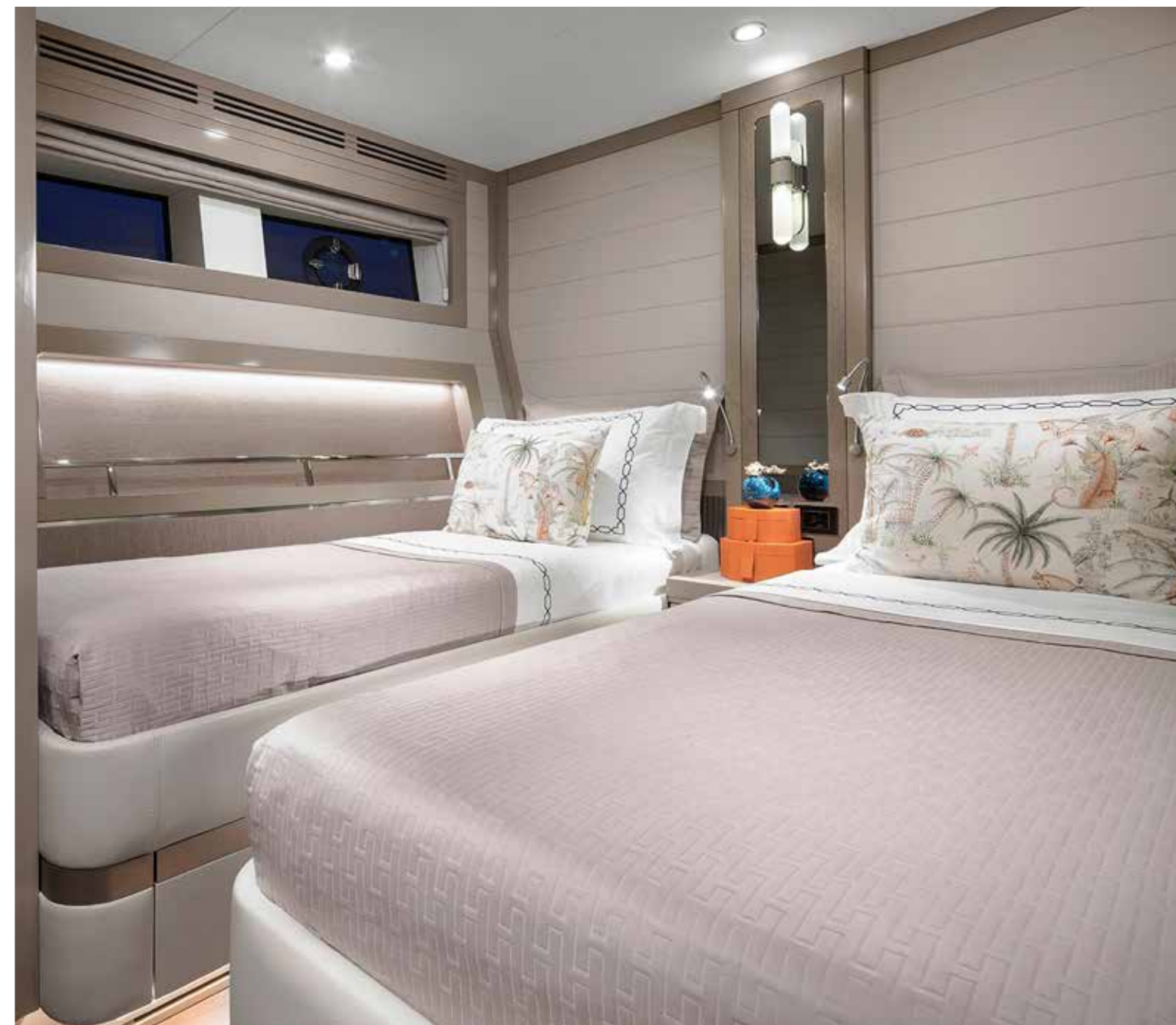




## VIP CABIN

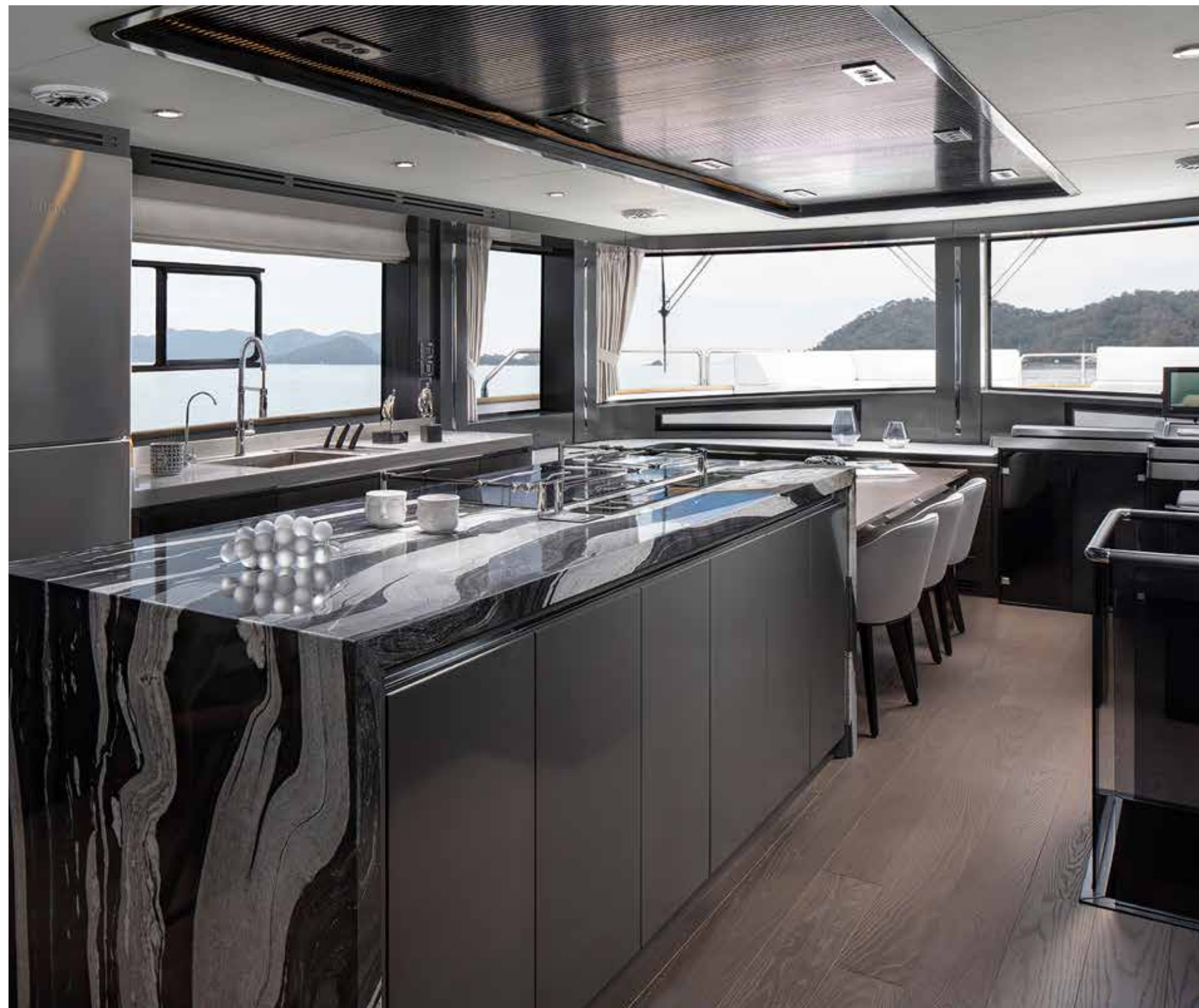
THE FRONT STATEROOM REVEALS  
A SPACE FIT TO WELCOME ABOARD  
IMPORTANT GUESTS, BATHED IN LIGHT  
FROM LARGE HULL SIDE WINDOWS AND  
SET APART FOR PRIVACY AND QUIET  
REPOSE, FINISHED TO THE EXPECTED  
HIGH LEVEL.





TWIN CABINS







# MASTER CABIN



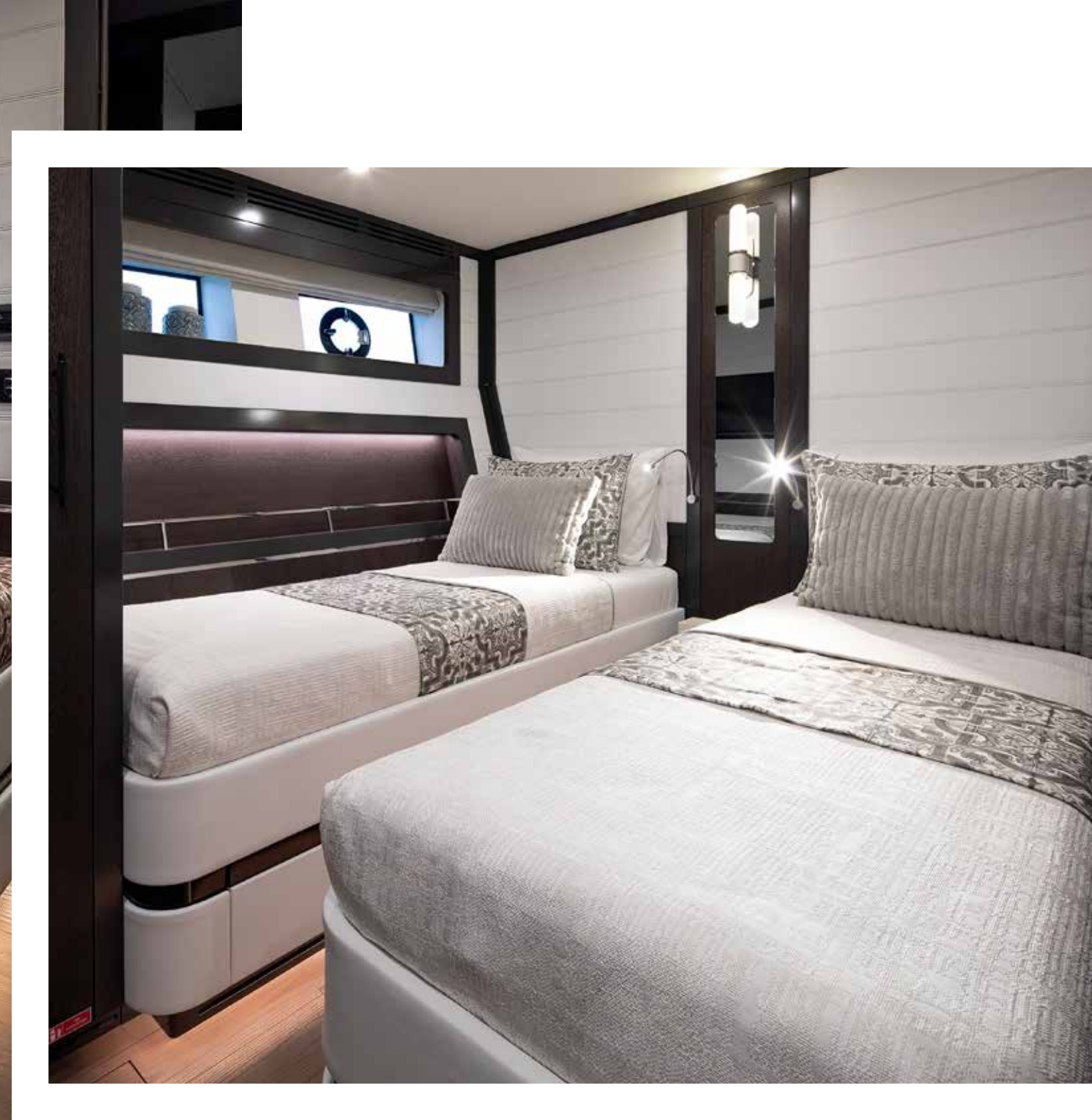


## VIP CABIN

THE LOWER DECK  
FORESIDE VIP FEATURES A  
KING SIZE BERTH, PRIVATE  
HEAD, AND A CHAISE  
SETTEE AND DESK SUITED  
TO AN OWNER'S SUITE.







TWIN CABINS





# ADVANCED TECHNOLOGY

Creating a hull design that is efficient and offers a range of speeds has been part of the Sirena Yachts plan from the beginning. To that end, a finely crafted yacht has specific needs for hull stiffness, overall hull weight, and a durable, long-lasting finish. Technology has been core component of the strategy of Sirena Yachts since the company's inception. The use of carbon fiber offers lightweight strength and stiffness in our hulls. If a boatbuilder does not have the advanced techniques to employ these next-generation materials, the benefits of using

them are wasted. Sirena Yachts craftsmen understand the use of carbon in conjunction with resin infusion, which uses vacuum-bagging to add the precise measurement of resin for the hull and parts to have the ideal balance of strength and weight. While some companies leave carbon fiber exposed as an ostentatious display of its use, we include it quietly, beneath the fine finish that sets apart our yachts. Craftsmanship is in the doing, and at Sirena Yachts, our artisans and craftsman understand the importance of making timeless yachts.



## The Soft Sell

The marine environment is beautiful but it is a hard place to succeed consistently, particularly for soft goods, and it will challenge your preconceived notions and your courage at every turn. Designing fabrics to be used on a yacht means creating something astonishingly beautiful that will catch the eye and glint in the sun, while also standing up to moisture and hard wear.



## Trick of the Eye

Creating a space on board that makes people feel comfortable and welcome is not an easy task. Making every space on a yacht deliver that level of appeal may seem to be downright impossible. Smart design means using the space available to achieve a desired result, and in ways that are consistent and flow into one another seamlessly.



## Crafting a Heritage

When one thinks of a yacht building heritage such as that of Turkey, the past plays a large role. But craftsmanship is as much about adapting the ways of the future to the challenges of today. Our craftsmen synthesize the strengths of the old ways and the intelligence of the new, making the latest creations something that people can enjoy, knowing they've never seen it before.





## LAUNCH DAY

WHEN THE SIRENA 78 EMERGED FROM THE SHED AT THE BOATYARD, ALL WHO OBSERVED HER COULD SEE THAT HER DESIGN PAYS HOMAGE TO THE SIRENA YACHT MODELS THAT HAD GONE BEFORE, AND YET HER STRENGTH AND SHAPE ALSO HELD THAT SHE WAS ALSO SOMETHING UTTERLY AND COMPLETELY NEW.



LAYOUT OPTIONS

FLYBRIDGE LAYOUTS

CLOSED LAYOUT



OPEN LAYOUT



SEMI LAYOUT





# 78 Flybridge Dimensions and Main Characteristics

Length Overall L <sub>OA</sub> (Include swim platform exclude anchor roller)	25 m / 82"
Hull Length L <sub>H</sub> ISO 8666 (Net GRP-Swim platform excluded)	22,1 m / 72' 5"
Waterline Length L <sub>WL</sub> ISO 8666	21,5 m / 70' 5" (@full load)
Hull Beam BH <sub>max</sub> ISO 8666	6,5 m / 21' 3"
Draft - T <sub>MAX</sub> ISO 8666	1,69 m / 5' 6" (@full load)
Loaded Displacement Dass - mLDC ISO 8666	80,8 tonnes / 178133 lbs
Height Above the Waterline Ha ISO 8666	8,0 m / 26' 4" (without equipment on top)
Light Craft Condition Mass - m <sub>LCC ISO</sub> 8666	68,25 tonnes / 150465 lbs
Diesel Tank Capacity	9000 lt / 2378 gal
Fresh Water Tank	1800 lt / 476 gal
Black Water Tank Capacity	800 lt / 211 gal
Gray Water Tank Capacity	800 lt / 211 gal
Cabins	4 + 1 (crew cabin)
Beds	8 + 2 (crew)
Heads	4 + 1 (crew head)
Building Materials	GRP / Carbon hybrid fiber
Hull Type	Semi-Displacement
Exterior Styling & Concept	Frers Naval Architecture & Engineering
Interior Decor	Cor D. Rover Design Studio
Hull Design	Frers Naval Architecture & Engineering
Engines	MAN V12 1400 HP x 2 MAN V12 1550 HP x 2 (optional)
Marine Gears	ZF 2000 V ZF 2050 V (optional)
Reduction Ratio	2,467:1
Transmission	V drive
Propeller Diameter (max)	990 mm
Max Speed*	25,8 knots (with 1400 HP engine)* 27,0 knots (with 1550 HP engine)*
Cruising Speed	16 knots
Economy Cruising Speed	10 knots
Consumption @ Cruising Speed 16 kn*	220 lt/hr
Consumption @ 10 kn	54 lt/hr
Range 9 kn (incl. 10% reservoir)*	Approx. 1500 NM
Certification	CE Category A

(\*)NOTE: Sirena 78 Semi-Enclosed version. All performance specified in the table above are design data and applies to a standard configuration boat (standard equipment installed as per this standard list) with clean keel, propellers, and rudders. Furthermore, the performance levels indicated above have been defined under good sea and wind conditions (Beaufort Scale level 1, Douglas Scale level 1, ambient T < 25°, seawater T = 15°, atmospheric P = 103250 Pa) with 2 people on board, 25% fuel, and fresh, grey and black water tanks empty. Different or harsher sea conditions and additional selected optional equipment may affect the performance.

# 78 Semi-Enclosed Dimensions and Main Characteristics

Length Overall L <sub>OA</sub> (Include swim platform exclude anchor roller)	25 m / 82"
Hull Length L <sub>H</sub> ISO 8666 (Net GRP-Swim platform excluded)	22,1 m / 72' 6"
Waterline Length L <sub>WL</sub> ISO 8666	21,5 m / 70' 5" (@full load)
Hull Beam BH <sub>max</sub> ISO 8666	6,5 m / 21' 3"
Draft - T <sub>MAX</sub> ISO 8666	1,72 m / 5' 8" (@full load)
Loaded Displacement Dass - mLDC ISO 8666	82,5 tonnes / 171780 lbs
Height Above the Waterline Ha ISO 8666	8,0 m / 26' 4" (without equipment on top)
Light Craft Condition Mass - m <sub>LCC ISO</sub> 8666	69,88 tonnes / 154061 lbs
Diesel Tank Capacity	9000 lt / 2378 gal
Fresh Water Tank	1800 lt / 476 gal
Black Water Tank Capacity	800 lt / 211 gal
Gray Water Tank Capacity	800 lt / 211 gal
Cabins	4 + 1 (crew cabin)
Beds	8 + 2 (crew)
Heads	4 + 1 (crew head)
Building Material	GRP / Carbon hybrid fiber
Hull Type	Semi-Displacement
Exterior Styling & Concept	Frers Naval Architecture & Engineering
Interior Decor	Cor D. Rover Design Studio
Hull Design	Frers Naval Architecture & Engineering
Engines	MAN V12 1400 HP x 2 MAN V12 1550 HP x 2 (optional)
Marine Gears	ZF 2000 V ZF 2050 V (optional)
Reduction Ratio	2,467:1
Transmission	V drive
Propeller Diameter (max)	990 mm
Max Speed*	25,8 knots (with 1400 HP engine)* 27 knots (with 1550 HP engine)*
Cruising Speed	16 knots
Economy Cruising Speed	10 knots
Consumption @ Cruising Speed 16 kn*	230 lt/hr
Consumption @ 10 kn	58 lt/hr
Range 9 kn (incl. 10% reservoir)*	Approx. 1400 NM
Certification	CE Category A

(\*)NOTE: Sirena 78 Semi-Enclosed version. All performance specified in the table above are design data and applies to a standard configuration boat (standard equipment installed as per this standard list) with clean keel, propellers, and rudders. Furthermore, the performance levels indicated above have been defined under good sea and wind conditions (Beaufort Scale level 1, Douglas Scale level 1, ambient T < 25°, seawater T = 15°, atmospheric P = 103250 Pa) with 2 people on board, 25% fuel, and fresh, grey and black water tanks empty. Different or harsher sea conditions and additional selected optional equipment may affect the performance.













SIRENA YACHTS

TR

Turkey, Headquarters

+90 212 219 74 74

Abdi İpekçi Cad. Ada Apt. No: 22/18

K: 5 34367 Nişantaşı / İstanbul

[sales@sirenayachts.com](mailto:sales@sirenayachts.com)

[www.sirenayachts.com](http://www.sirenayachts.com)

SIRENA MARINE